

Firmware upgrade procedure (32bit)

Caution:

- The firmware upgrading may destroy your data of PMP5080B, please back up your data before upgrading.
- Update is compatible only with 32bit OS
- It may be not compatible with USB port driver. Try to change connection to another front/rear USB-port because you have variety of USB 1.0/2.0/3.0 on PC.

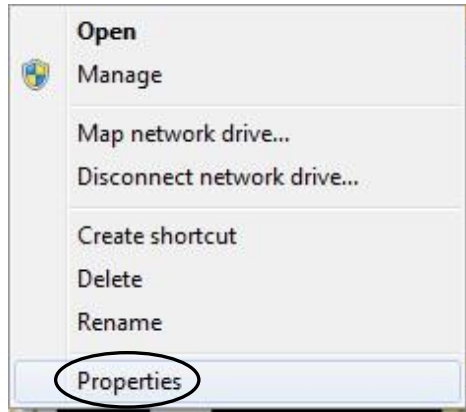
1 Driver installation



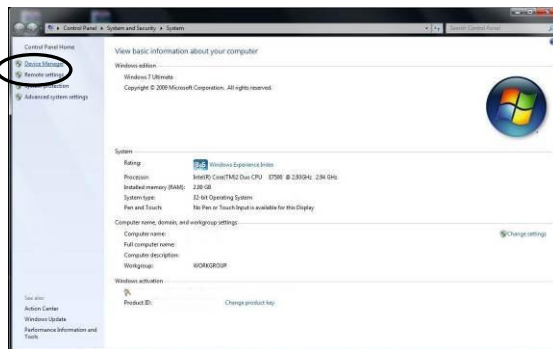
- If there's no ROCK USB driver with your PC, driver installation will be necessary for the upgrading.
- Power off your PMP5080B, press and hold the “VOL MINUS” button then connect the device with PC via USB cable.



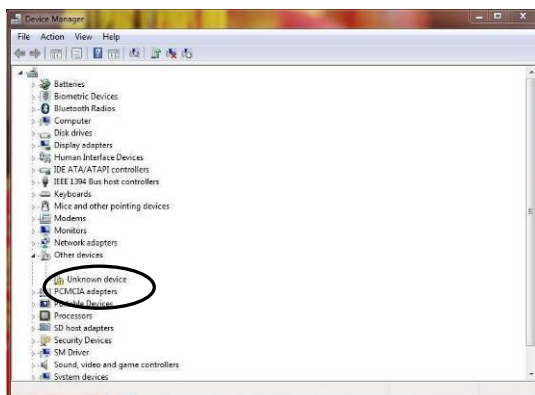
- A “Installing device driver...” window should pop up in the task bar of desktop.
- A “Device driver software was not successfully installed...” window should pop up.



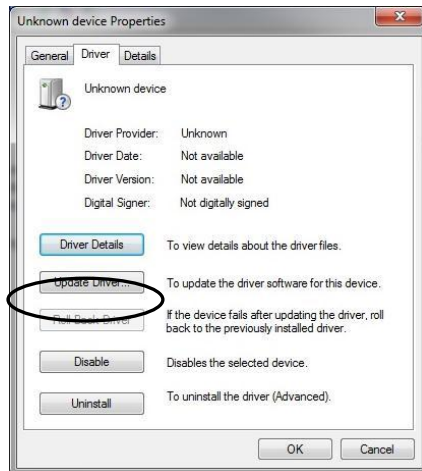
- Right click **Computer** in the desktop, and then click on **Properties**.



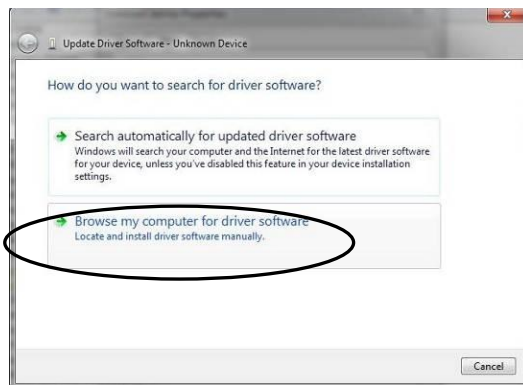
- Click on **Device Manager**.



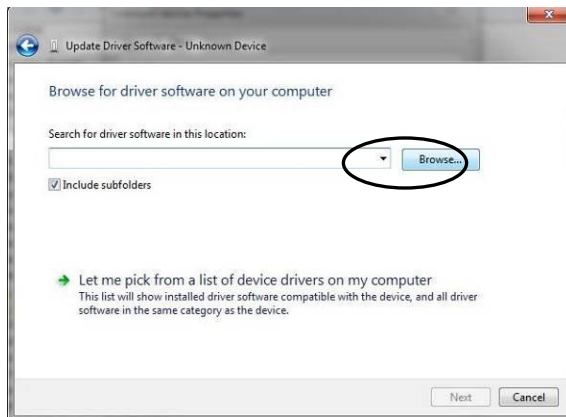
- Click on **Other devices**, then double click **Unknown device** to continue.



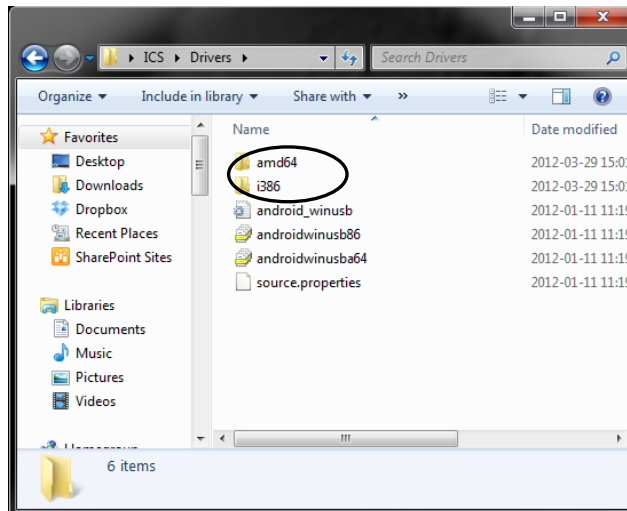
- Click on **Driver**, then click on **Update Driver...** to continue.



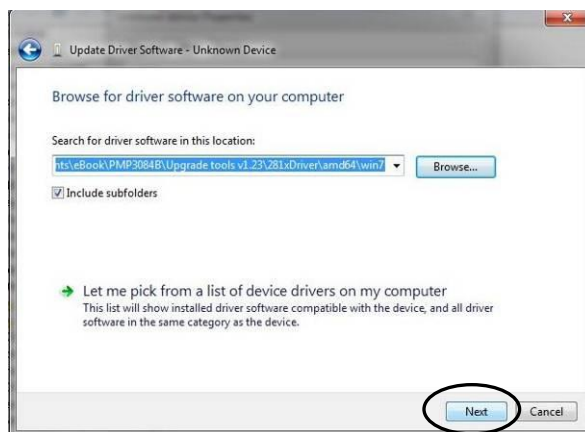
- Click on "**Browse my computer...**".



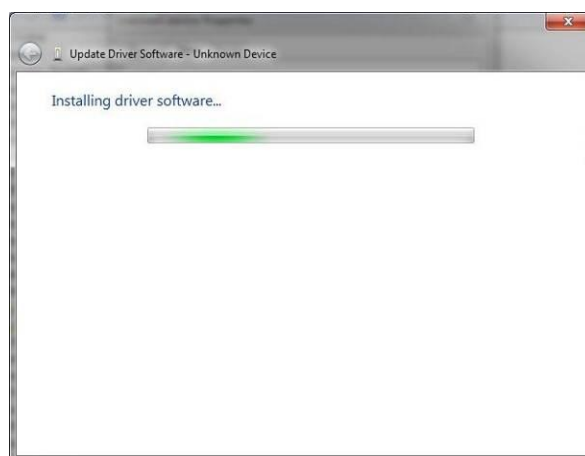
- Click on "**Browse...**" to locate the driver manually.



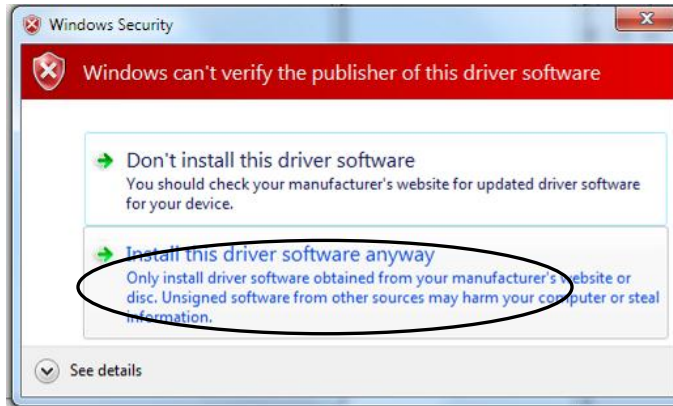
- Select “**Drivers_x32\...**” in accordance with your OS, and then click on **Ok**.



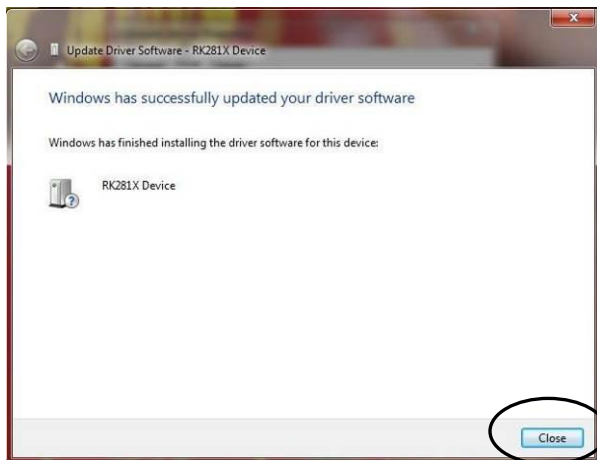
- Click on **Next** to continue.



- It will show “**Installing driver software**” in the window.



- A Windows Security box should pop up, click on **"Install"**.

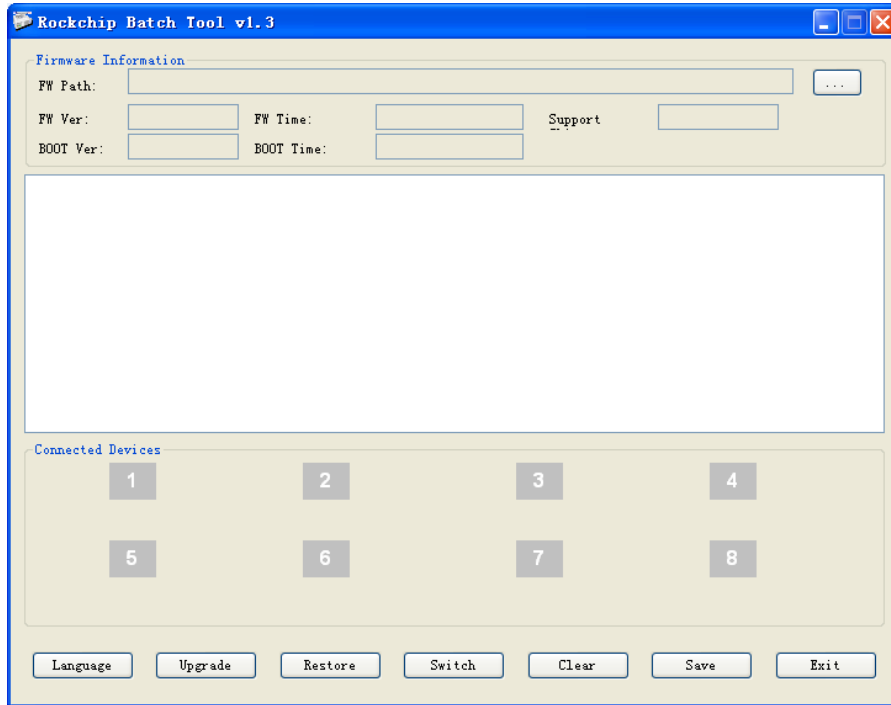


- Click on **Close** to complete the driver installation.

2 Firmware Upgrade

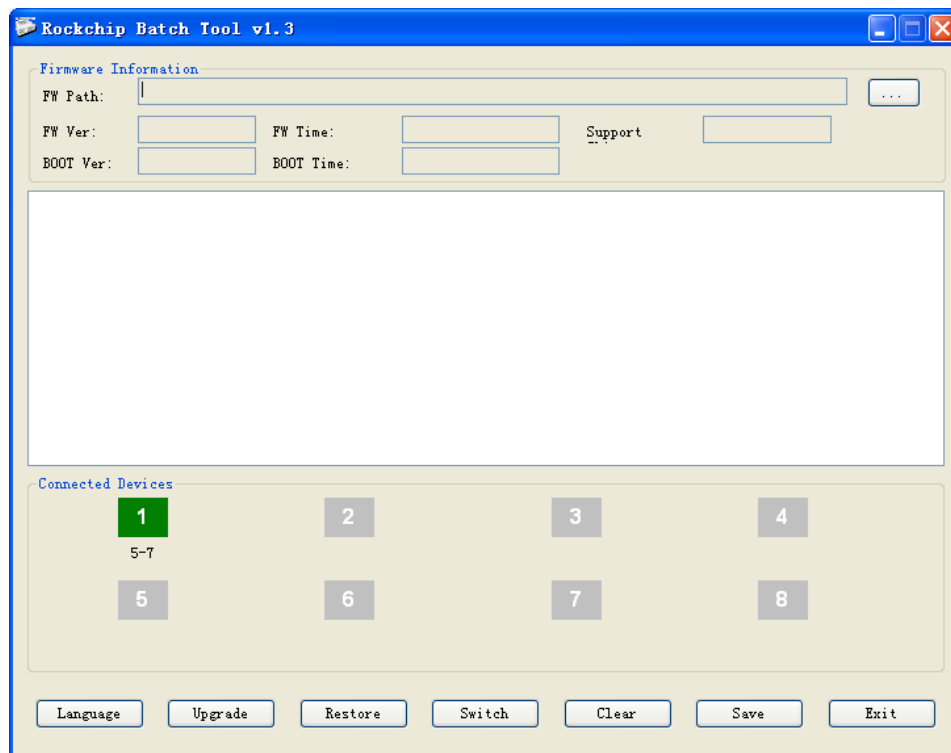
2. Firmware upgrade

- a. Open upgrade tool “RKBatchTool.exe”

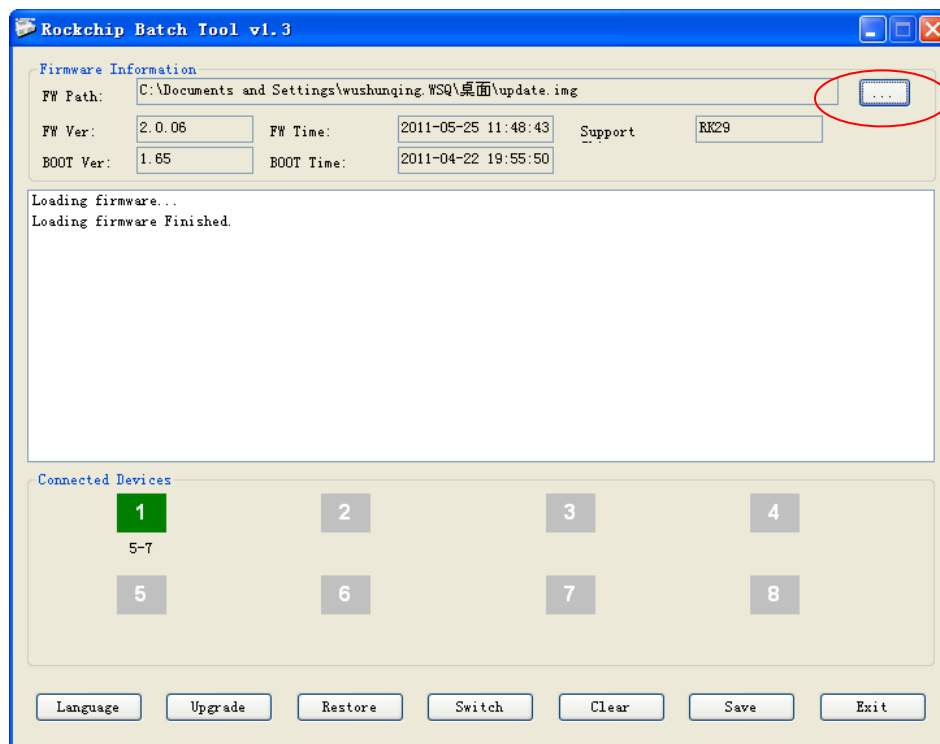


- Power off your PMP5080B, press and hold the “**VOL MINUS**” button then connect the device with PC via USB cable.

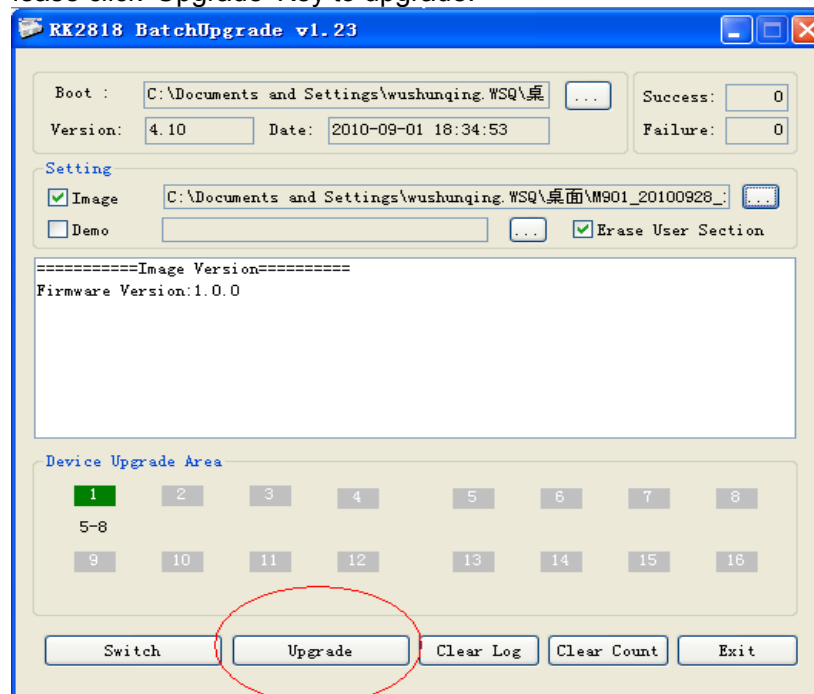
- c. Device Upgrade Area will become GREEN COLOR



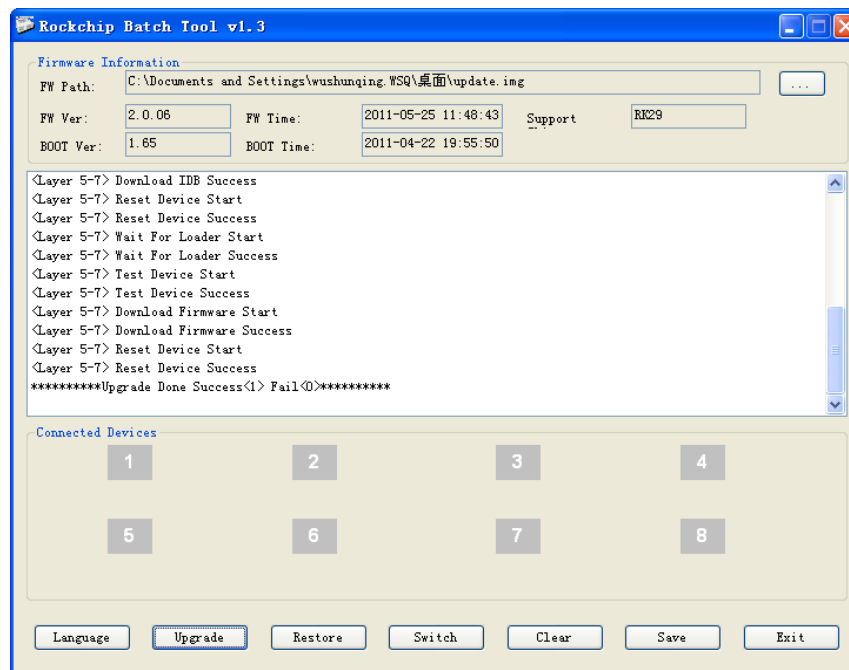
d. Please choose IMAGE file path.



e. Please click 'Upgrade' Key to upgrade.



5. If upgrade successfully, such as below picture, the device would be turn on automatically.



Initial start should be performed without SD card