

Teclast TBook 11 System Installation Guide

Version 1.0

Precautions:

1. Prior to the system installation, carefully read the detailed steps in this tutorial
2. This tutorial is meant for the installation on a dual boot BIOS system
3. The installation will erase all data on the disk, please backup important data in advance
4. The installation process takes approximately 30-40 minutes. Prior to the installation you have to ensure the battery of the tablet is fully charged. It is also recommended to ensure the tablet is connected to a power source during the installation, preferably at a externally powered USB hub.
5. The installation process is divided into two parts, the Android installation and Windows installation. Each part can be done separately depending on your needs. You can reinstall the Windows partition without the need to erase the Android partition first.

However, the Android recovery installation will also erase the Windows partitions. Be careful to choose the correct installation type!

Preparation:

1. Go to the Teclast official website, enter the machine ID found at the back shell of the tablet, and download the corresponding flash tools and system package and uncompress it.
2. Download the latest flash tools from Intel:
<https://software.intel.com/android/articles/intel-usb-driver-for-android-devices>
<https://01.org/android-ia/downloads/intel-platform-flash-tool-lite>
3. Have a USB keyboard by hand, otherwise it will be hard to navigate inside the BIOS
4. Have two or more USB flash drives with at least one having a capacity of 16GB by hand
5. Have a externally powered USB HUB by hand

Installation of the Android firmware

1. **Install the Android flash tool in the following order:**
 - a. Uncompress and install IntelAndroidDrvSetup1.10.0.zip
 - b. Uncompress and install Intel® Platform Flash Tool Lite 5.5.2

Special Notes:

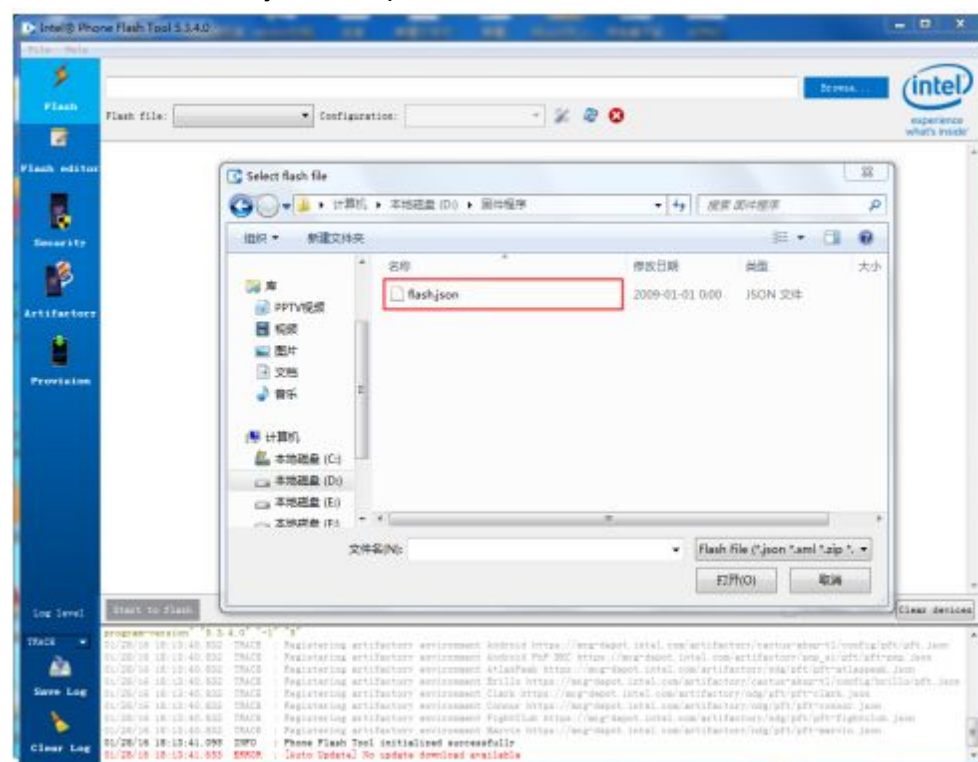
- A. The flash tools have to be installed in the above order
- B. Do not change the default installation settings and installation path
- C. The desktop shortcut icon of the upgrade tool will appear after a successful installation as shown in Figure 1



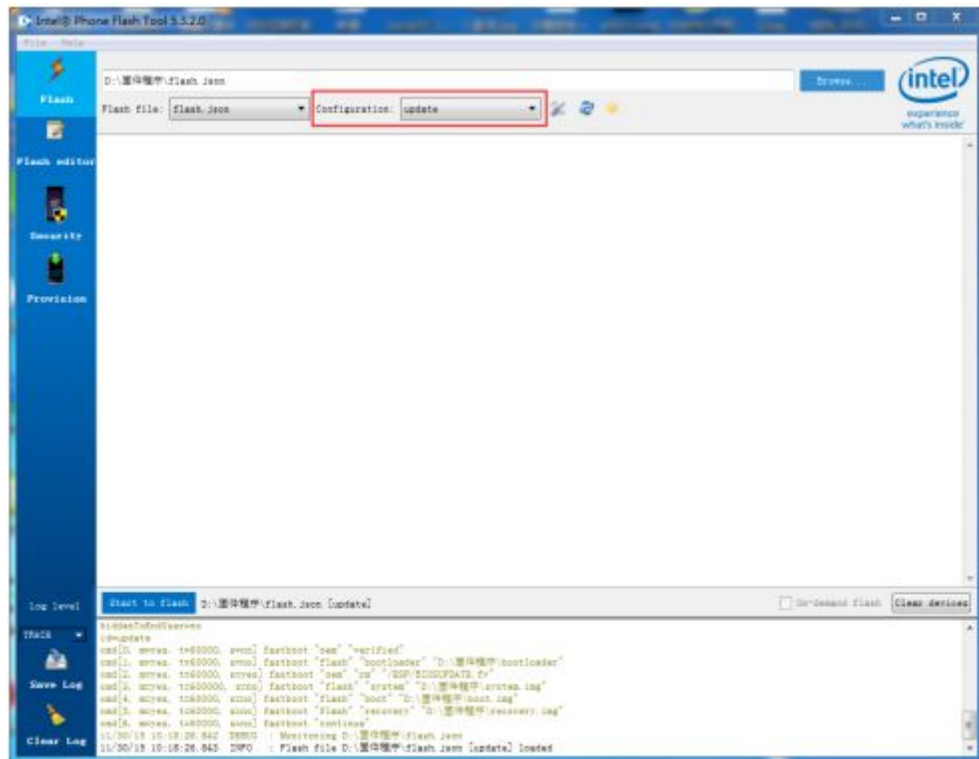
2. Update installation Android without erasing Windows

(Note: the update respectively upgrade process clears Android system settings and files, similar to an OTA upgrade. Thus, some parts will not be affected by the process. Thus, after flashing the system, it is recommended to perform a factory reset.)

- 2.1. Run "Phone Flash Tool", then click on the "Browser" button in the file selection pop-up window, locate the unzipped firmware program directory, select the file "flash.json" to open..



- 2.2. After choosing the "flash.json" file, change the "Configuration" option to "update", as shown below.



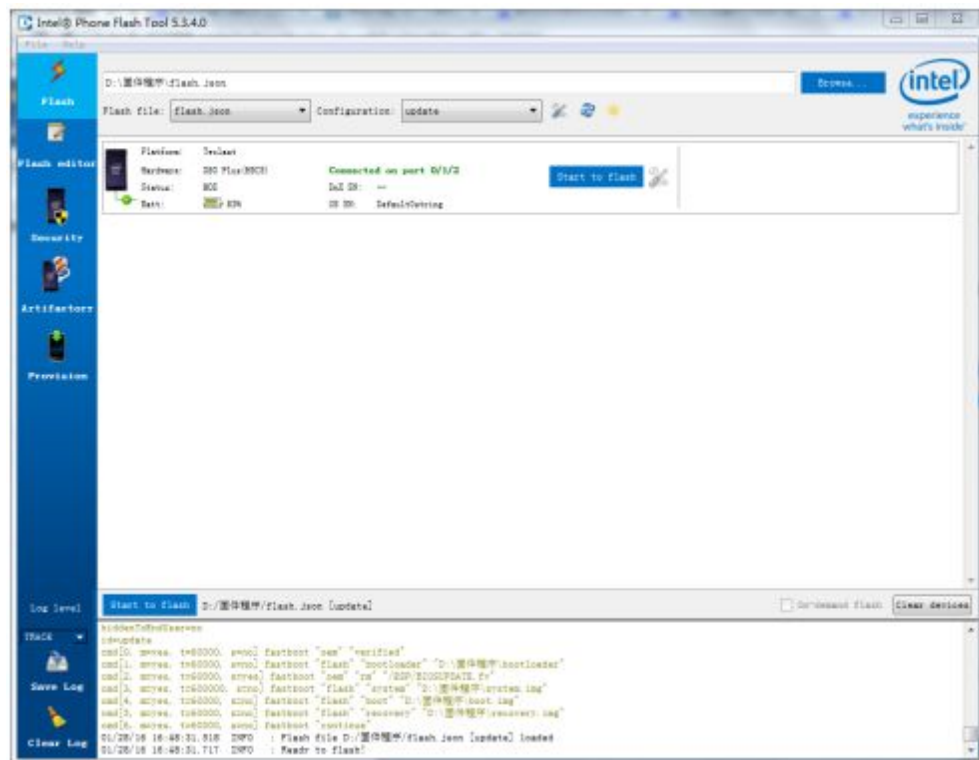
After the restart chose to enter the Android OS

- 2.3. In the system configuration menu, open the "Developer options", locate and select the "USB debugging" option item, as shown below.

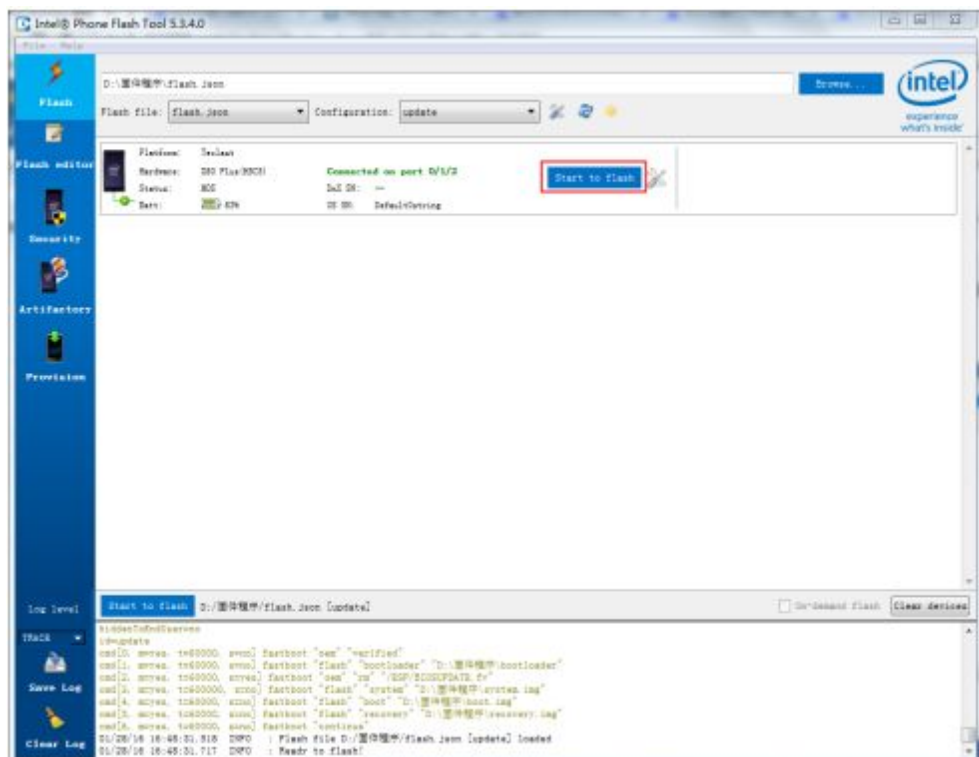


- 2.4. With a USB cable connect the tablet to the computer, if already done. The computer will detect and install the device driver. If successful, the upgrade tool will show the device being connected with a "Start to Flash", as shown

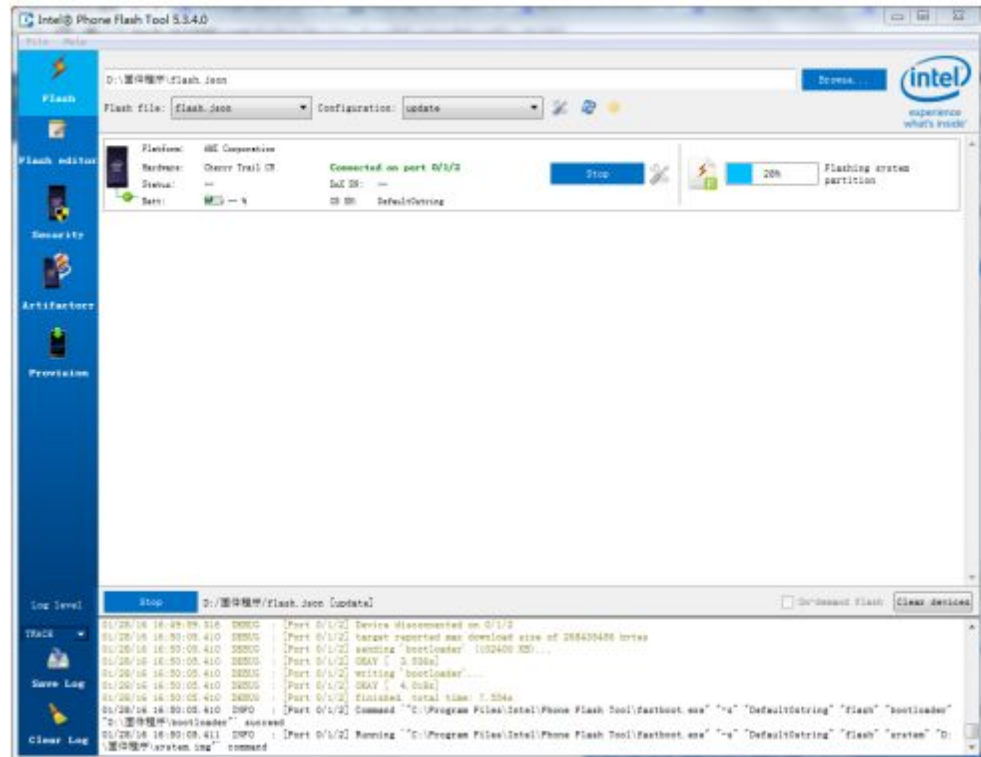
below.



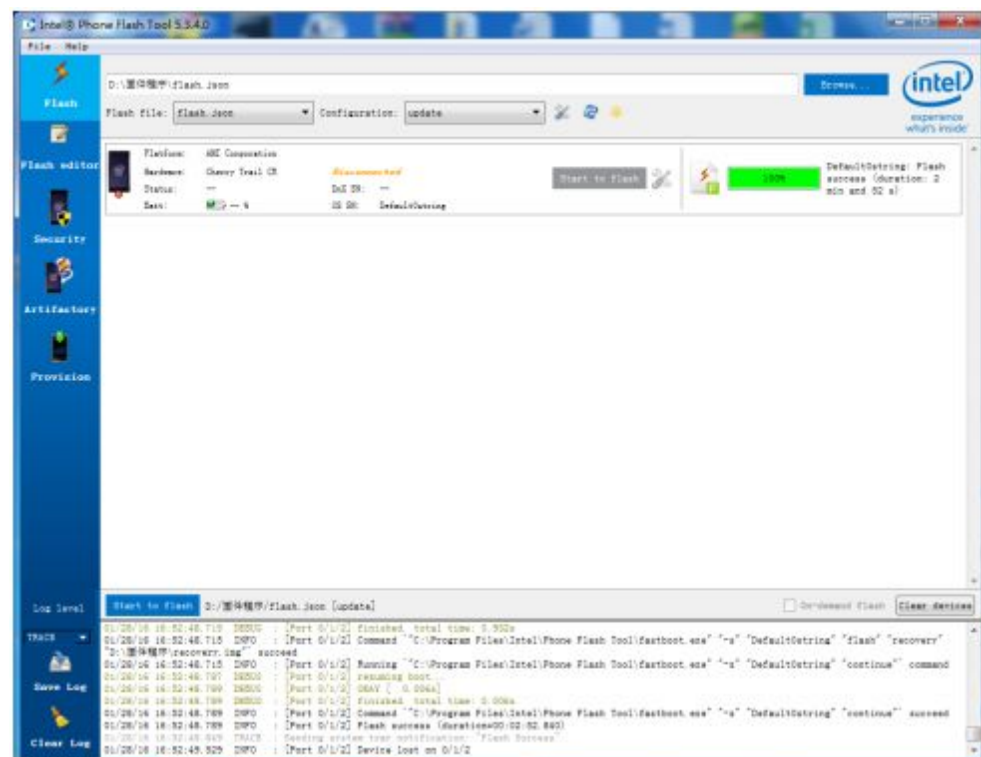
2.5. Click "Start to Flash" button to start the firmware programming.



- 2.6. The upgrade progress is shown. The time for the entire upgrade process will take longer, so please be patient and do not disconnect or turn off the system.

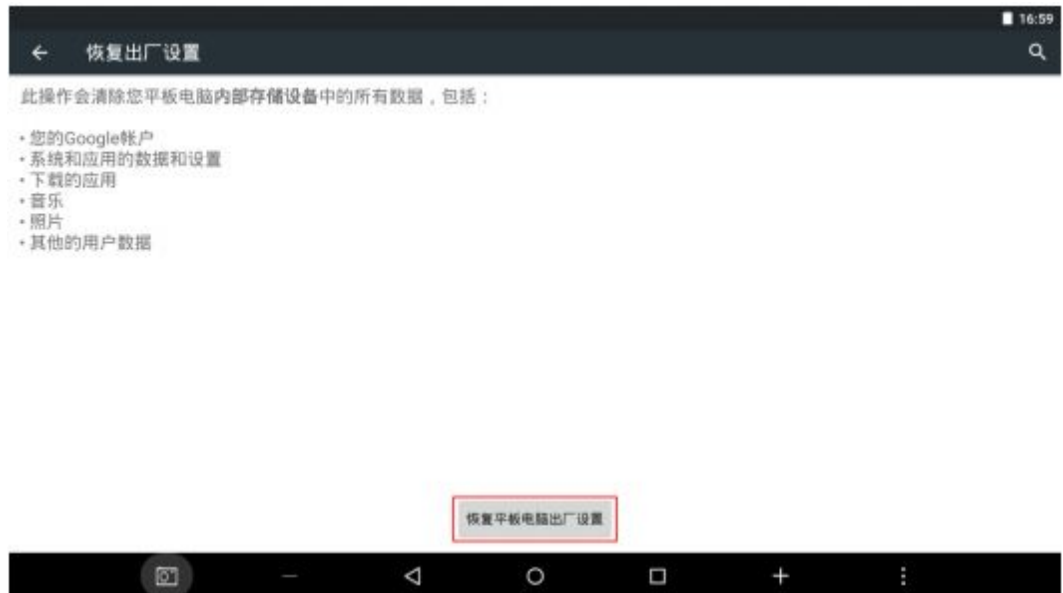


- 2.7. Wait until progress bar reaches 100%. After the upgrade was successful, the tablet will restart automatically. Disconnect the tablet from the computer and close the upgrade tool.



- 2.8. Note: the update respectively upgrade process clears Android system settings and files, similar to an OTA upgrade. Thus, some parts will not be

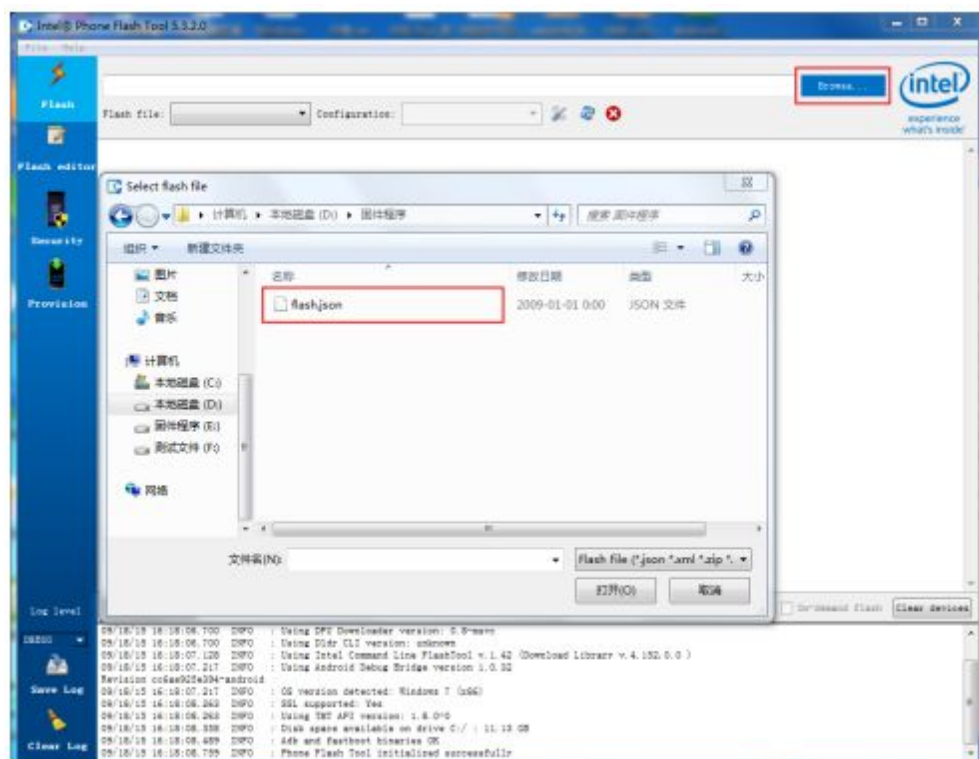
affected by the process. Thus, after flashing the system, we need to do a factory reset. Open the "Settings -> Backup and Reset -> Restore factory settings -> Restore tablet memory factory settings", as shown below.



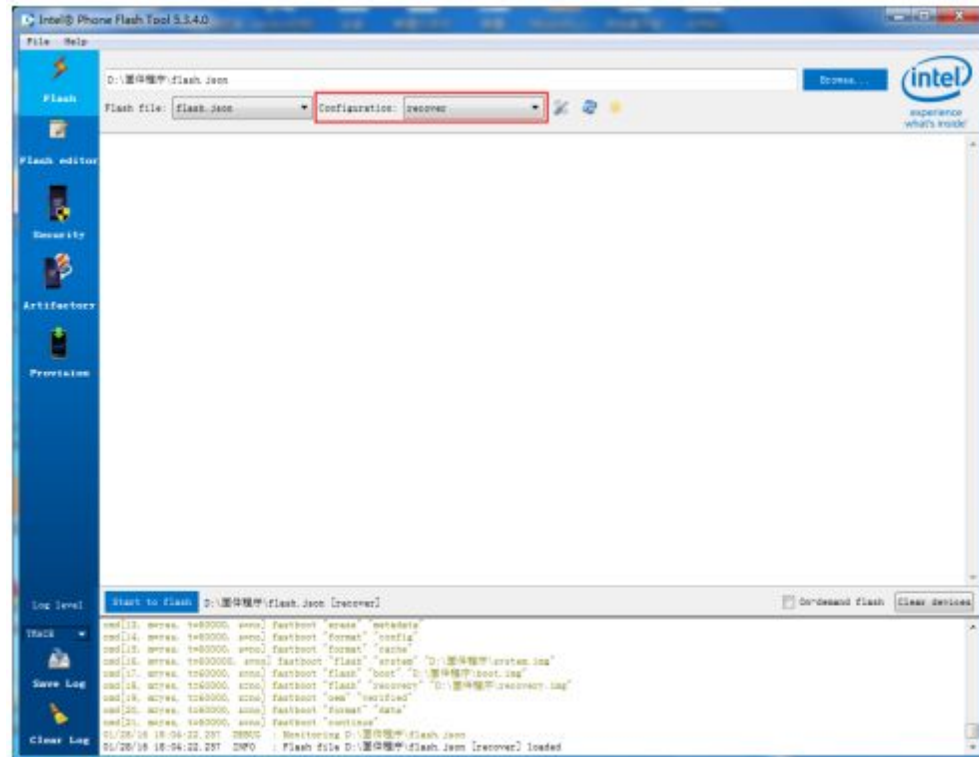
3. Recovery installation of the Android system

(Note: this method will erase all data on your device, i.e. Windows and Android will be erased)

- 3.1. Run "Phone Flash Tool", then click on the "Browser" button in the file selection pop-up window, locate the unzipped firmware program directory, select the file "flash.json" to open.



- 3.2. After choosing the "flash.json" file, change the "Configuration" option to "recover", as shown below

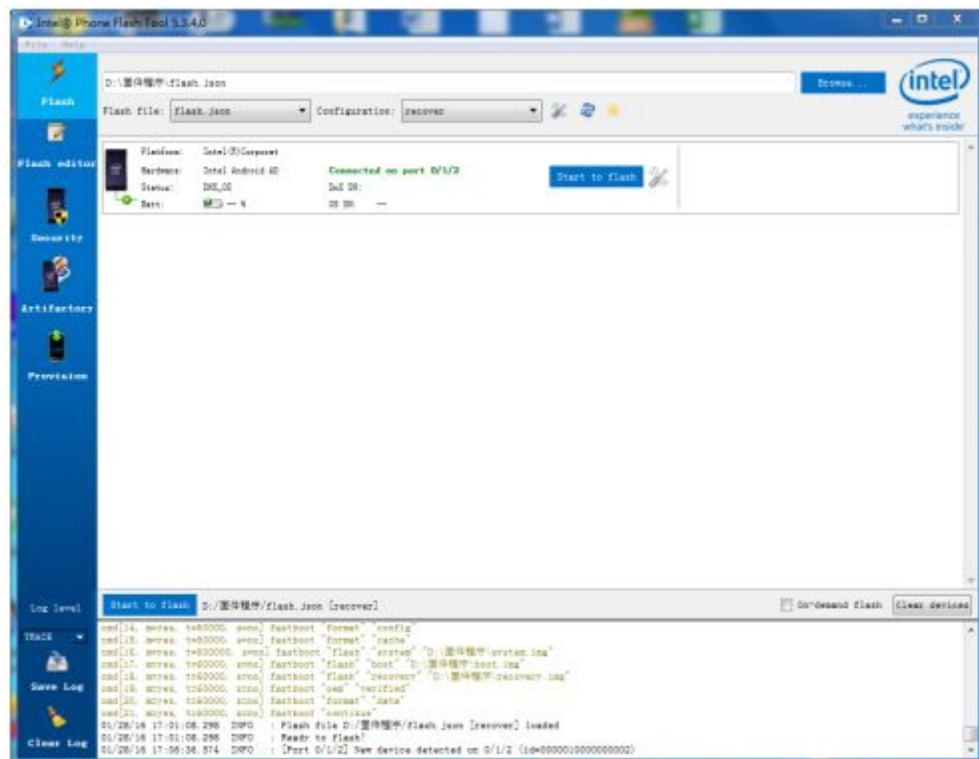


- 3.3. Boot the Tablet PC into the Android system. Then shut down the Android system and restart the tablet while holding down "power button + volume up + volume down" (alternatively the "power button" + "volume down") and release when "DNXFASTBOOT MODE ..." appears, as shown below.

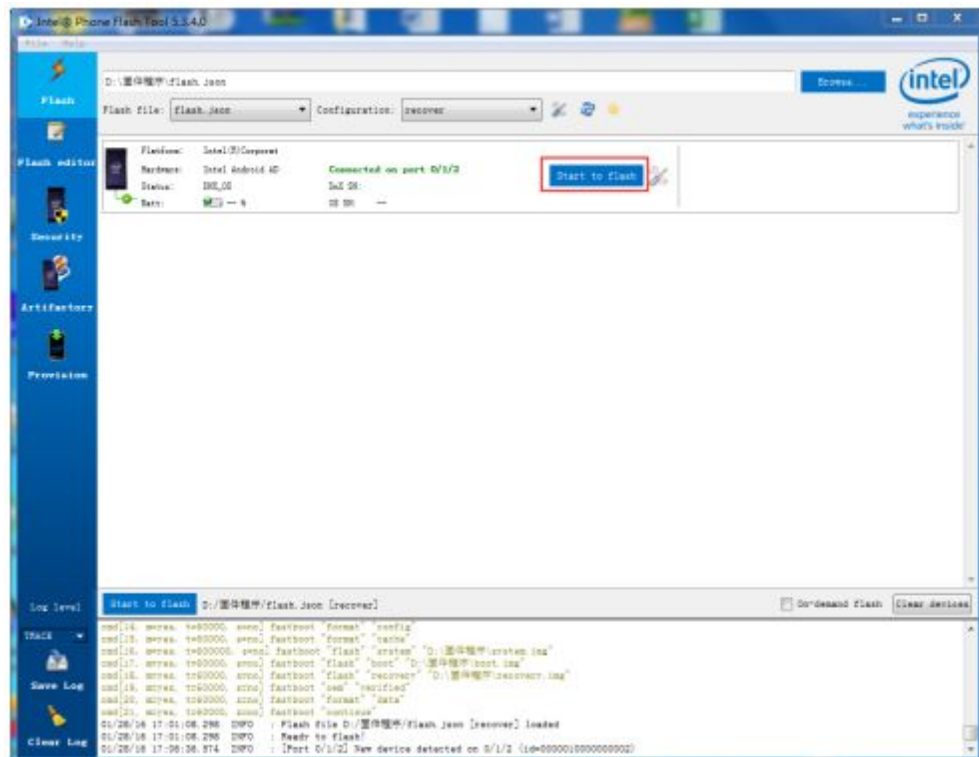


- 3.4. With a USB cable connect the tablet to the computer, if already done. The computer will detect and install the device driver. If successful, the upgrade tool will show the device being connected with a "Start to Flash", as shown

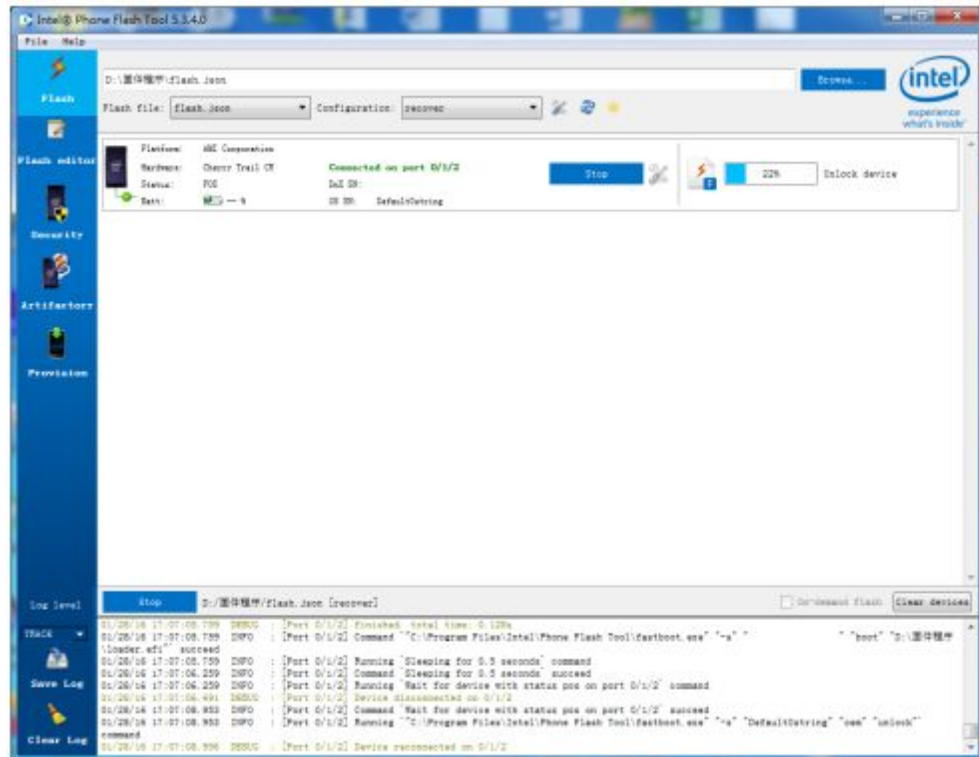
below..



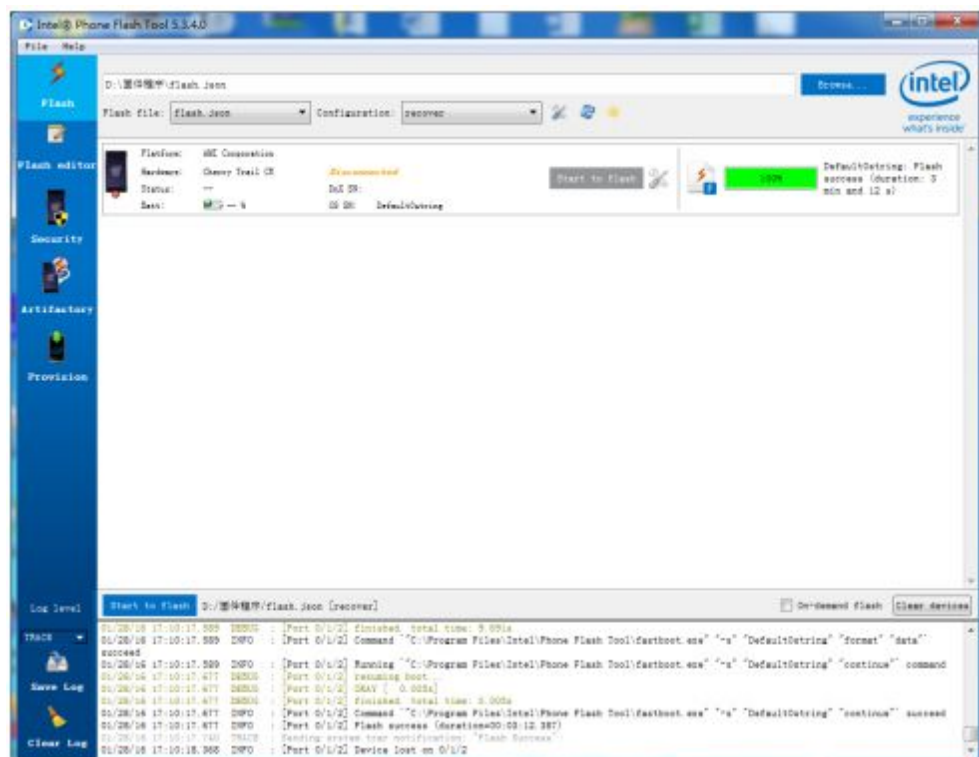
3.5. Click "Start to Flash" button to start the firmware programming.



- 3.6. The upgrade progress is shown. The time for the entire upgrade process will take longer, so please be patient and do not disconnect or turn off the system.



- 3.7. Wait until progress bar reaches 100%. After the upgrade was successful, the tablet will restart automatically. Disconnect the tablet from the computer and close the upgrade tool.



Flash the Windows system

1. Create a bootable USB flash disk with WinPE disk images and files:

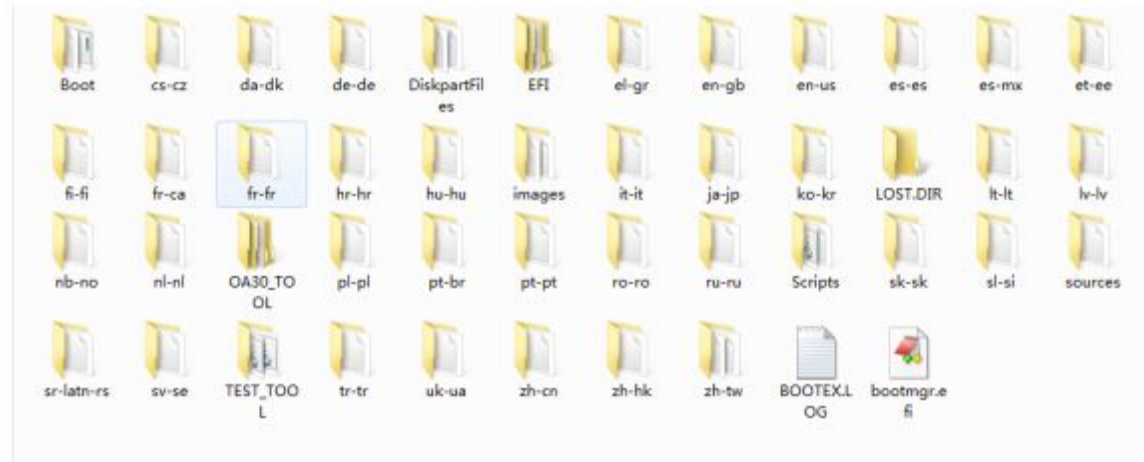
- 1.1. Insert the USB disk into the computer, right click the USB disk, in the pop-up menu, select "Format";



- 1.2. In the pop-up menu in the format, "label" is changed to "WINPE", as "File System" select FAT32, click on "Start"



- 1.3. When formatted successfully decompress the downloaded "WinPE (user).rar" archive, and copy the content of the folder "WinPE (user)" under the root directory to the USB disk (WINPE), as shown in the following figure.

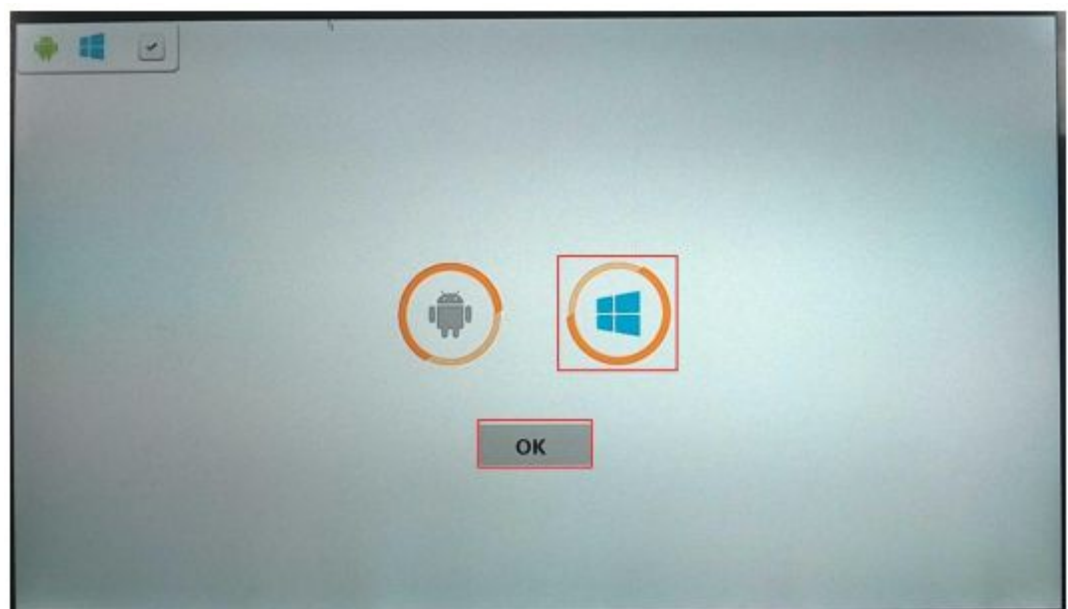


- 1.4. Then create another USB disk, label the disk with the name "images", and select "NTFS" as the file system "NTFS" format. Then extract the files of the downloaded Win10_images and copy the entire images to this root directory of USB disk.

2. For a Tablet PC being prepared as dual boot system, do the following to install Windows:

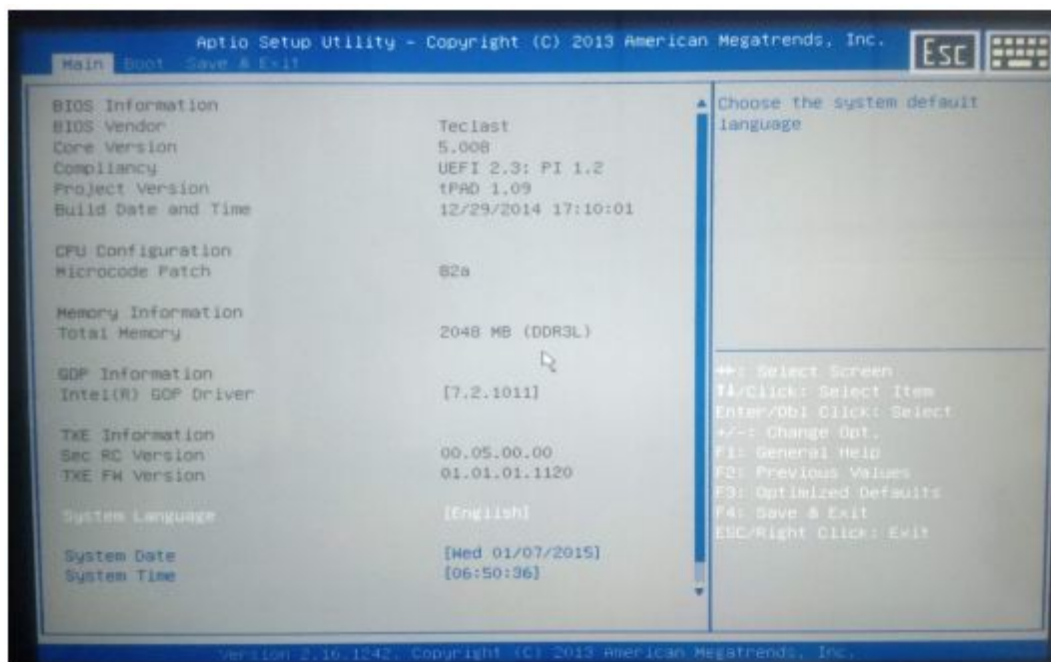
- 2.1. If the tablet is a dual system (OS boot selection screen present both the Android and the Windows logo at the same time), but you need to reinstall the Windows system.

Press the tablet's power button 3-5 seconds to boot, when the OS selection screen appears, select the Windows logo and select "OK" to enter the Windows system, as shown below:



- 2.2. After successful boot into the Windows system, shut the machine down.

- 2.3. With the machine shut off, connect your tablet with the USB OTG cable with the USB HUB, to which the 2 USB disks and the USB keyboard are connected.
- 2.4. Short press the power button again for 3-5 seconds to boot. When the screen display the Teclast LOGO, immediately press the "Delete"/"ESC" key on the keyboard to enter the BIOS setup, as shown below.

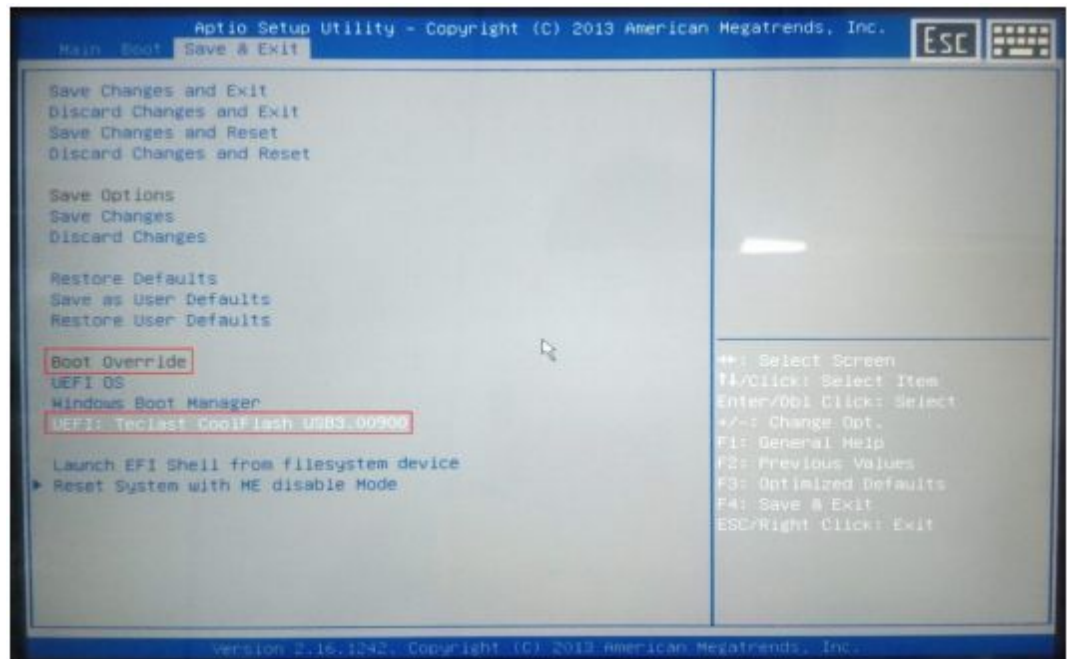


- 2.5. Jump with the left and right arrow keys to "Save & Exit", as shown below.

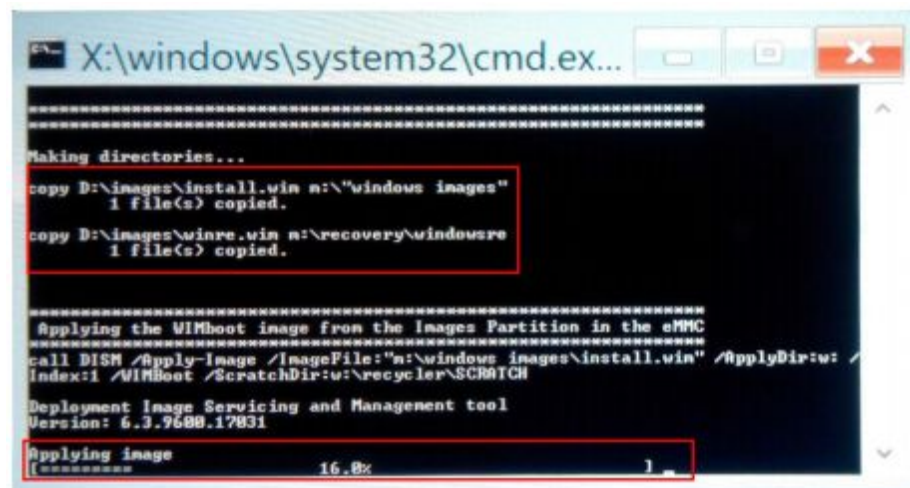


- 2.6. With the keyboard "up" and "down" arrow keys, select the corresponding USB disk device in "Boot Override" (Sometime the USB disks appear with the

same name), Press the Enter key to boot from the selected USB disk first.



- 2.7. The tablet boots from the selected USB disk and the machine will automatically start copying the Windows system and to install the system files, as shown below.

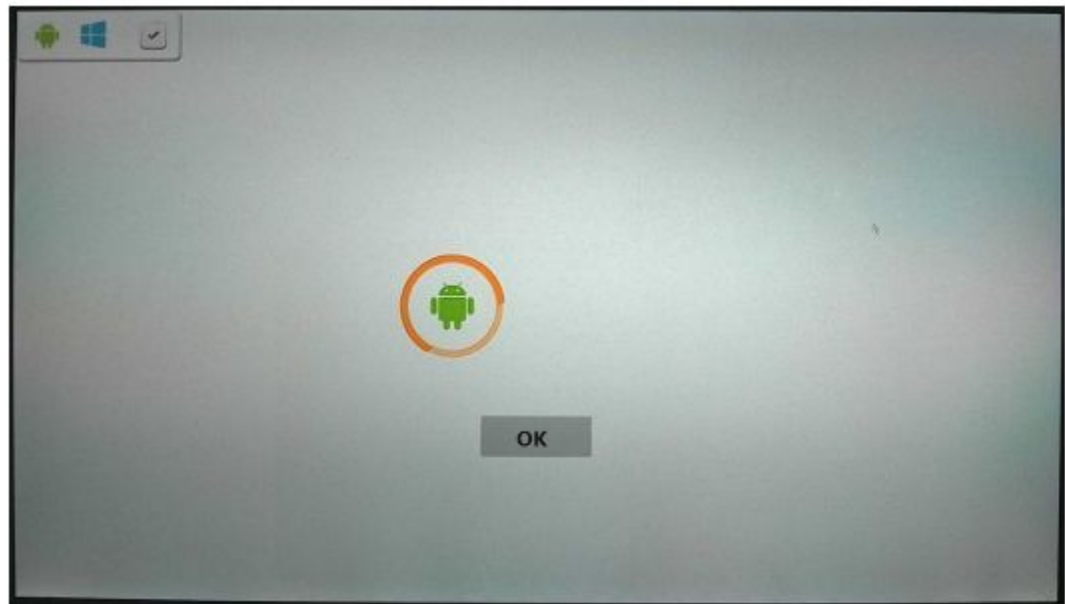


- 2.8. After the transfer of the system is completed, the machine will restart from automatically into the Windows system and the installation wizard will ask for the relevant information before the system can be used. (Note: Copying the system takes a long time, please be patient)

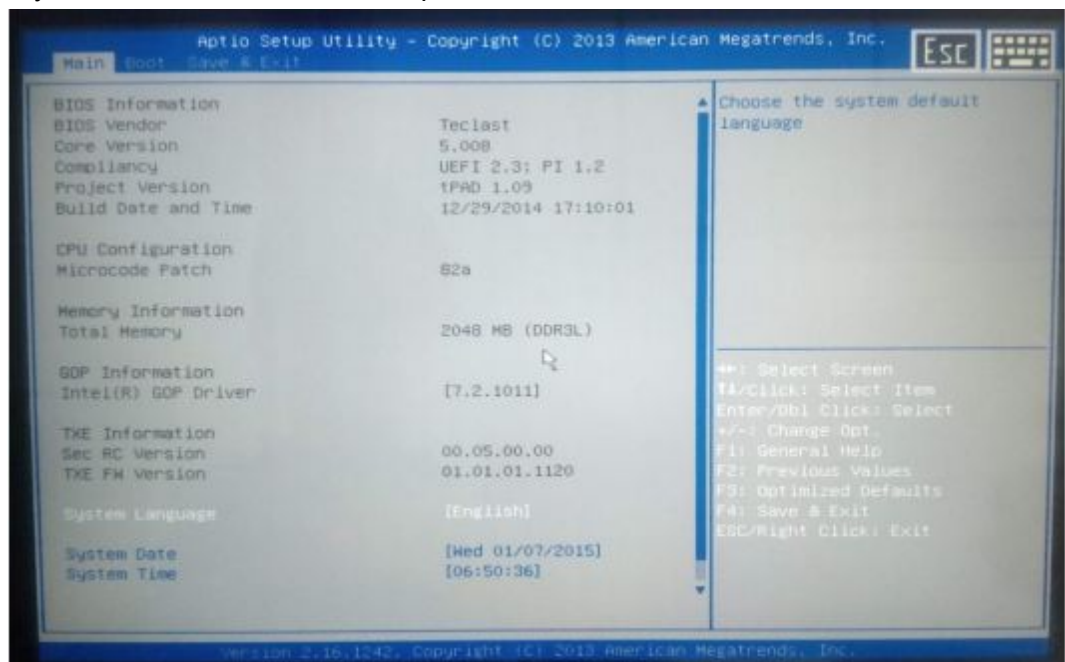
3. If the tablet Android as a single operating system, do the following to install Windows

- 3.1. If the tablet is a single Android system, that is, when you flash the Android firmware in recovery mode, the OS boot selection interface shows only the

Android logo, as shown below.



- 3.2. With the machine shut off, connect your tablet with the USB OTG cable with the USB HUB, to which the 2 USB disks and the USB keyboard are connected.
- 3.3. Short press the power button again for 3-5 seconds to boot. When the screen display the Teclast LOGO, immediately press the "Delete"/"ESC" key on the keyboard to enter the BIOS setup, as shown below.



- 3.4. Jump with the left and right arrow keys to "Save & Exit", as shown below.

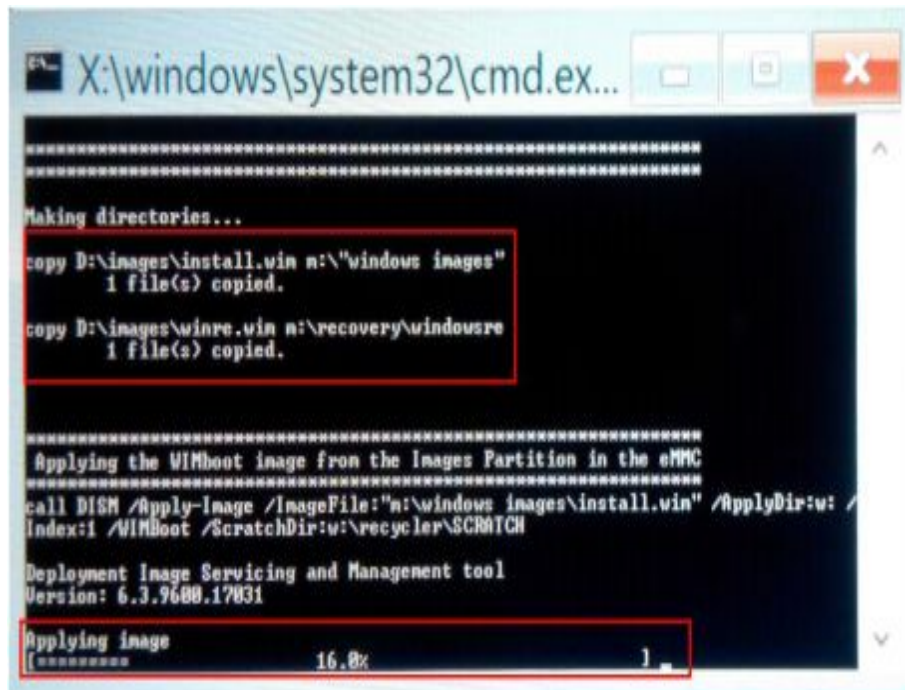


- 3.5. With the keyboard “up” and “down” arrow keys, select the corresponding USB disk device in "Boot Override" (Sometime the USB disks appear with the same name), Press the Enter key to boot from the selected USB disk first.



- 3.6. The tablet boots from the selected USB disk and the machine will automatically start copying the Windows system and to install the system

files, as shown below.



```

X:\windows\system32\cmd.ex...
=====
Making directories...
copy D:\images\install.win n:\\"windows images\"
    1 file(s) copied.
copy D:\images\winre.win n:\recovery\windowsre
    1 file(s) copied.

=====
Applying the WIMboot image from the Images Partition in the eMMC
=====
call DISM /Apply-Image /ImageFile:\"n:\windows images\install.win\" /ApplyDir:w: /
Index:1 /WIMboot /ScratchDir:w:\recycler\SCRATCH

Deployment Image Servicing and Management tool
Version: 6.3.9600.17031

Applying image
[===== 16.8%] 1
  
```

4.

- 4.1. After the transfer of the system is completed, the machine will restart from automatically into the Windows system and the installation wizard will ask for the relevant information before the system can be used. (Note: Copying the system takes a long time, please be patient)
- 4.2. Windows system has been installed, the boot screen show the corresponding system OS icon in the interface