

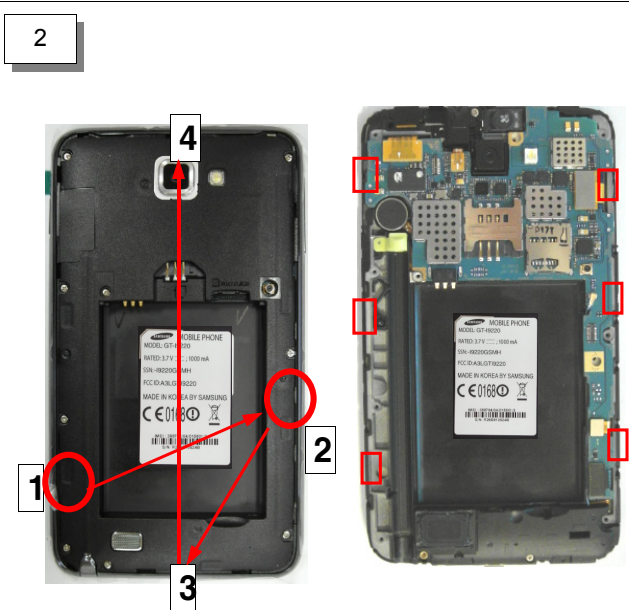
7. Level 2 Repair

7-1. Disassembly

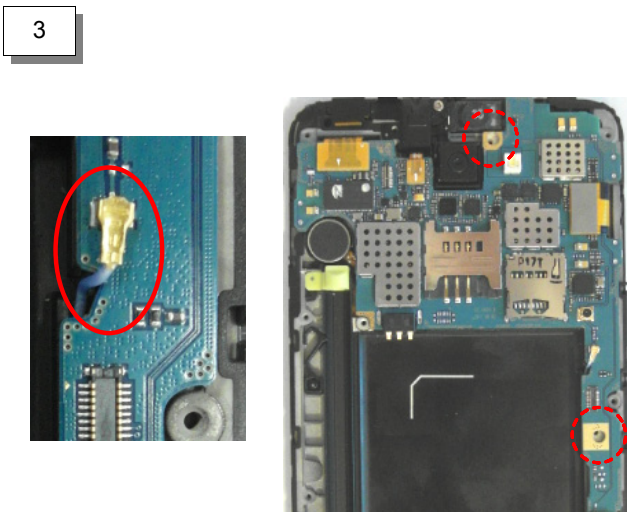


Release the screws at 9 points.
(Torque: 1.0 ± 0.1 kgf.cm) (Size: M1.4*L3)

DO NOT MAKE SCRATCH ON THE REAR.



Disjoint hook 6 points at the rear
(Follow the order)



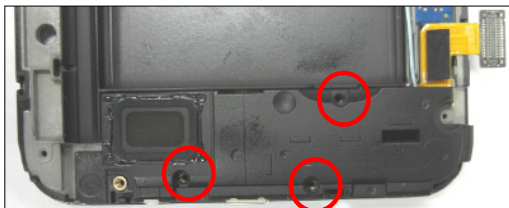
Separate the cable from the PBA.
Release the screw 2point(Size: M1.4*L3)
(Torque: 1.1 ± 0.1 kgf.cm)

Be careful not to rip up the FPCBs.



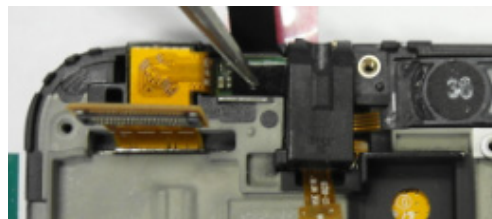
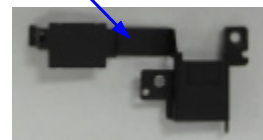
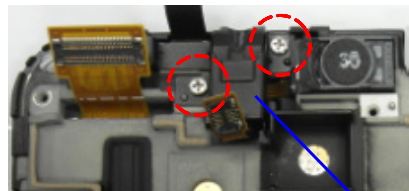
Separate all connectors from the PBA.
Separate the PBA from the Front.

5



Release the screw 3point(Size: M1.4*L2.5)
(Torque: 1.0±0.1 kgf.cm)
Separate the sub PBA from the PBA.

6

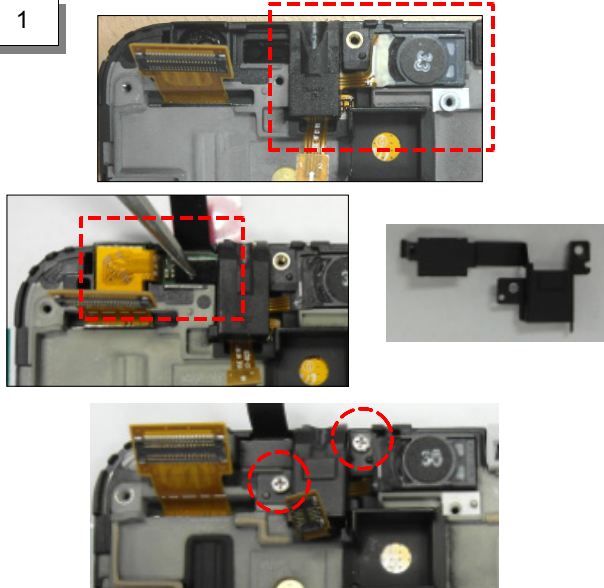


Release the screw 3-point(Size: M1.4*L2.5)
(Torque: 1.0±0.1 kgf.cm)
Separate the black plate.
Separate Receiver Ass'y and CAM/Sensor
Ass'y from the Front.

Be careful not to rip up the FPCBs.

7-2. Assembly

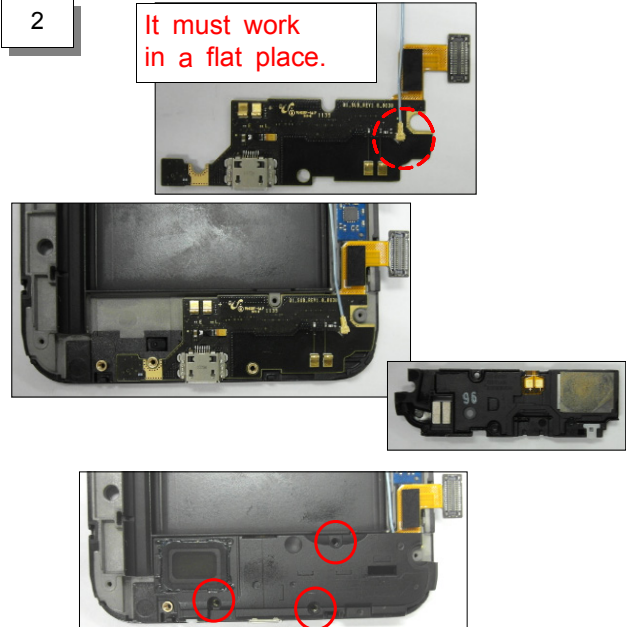
1



Insert the receiver/earjack ass'y into the front.
Insert the 2M cam/censor ass'y into the front.
Attach black plate.
Screw 2 points. (Size: M1.4*L2.5)
(Torque: 1.0±0.1 kgf.cm)

Be careful not to damage the camera FPCB.

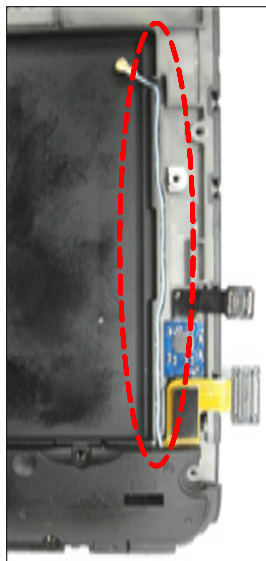
2



It must work
in a flat place.

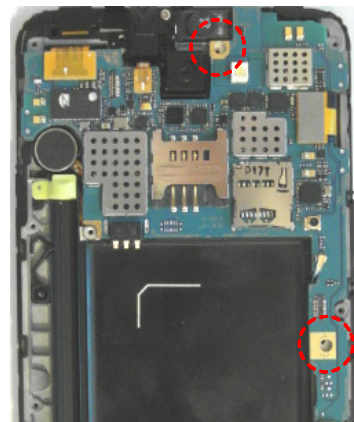
Connect the cable on the sub PBA.
Attach the sub PBA on the Front.
Attach SPK/Intenna module on the sub PBA.
Screw 3 points. (Size: M1.4*L2.5)
(Torque: 1.0±0.1 kgf.cm)

3



Organize the cable in the furrow.

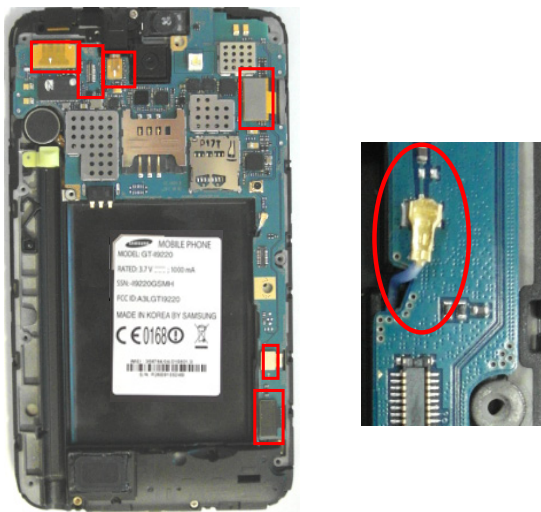
4



Put the PBA on the Front.
Screws at 2point (Size: M1.4*L3)
(Torque: 1.1±0.1 kgf.cm)

Be careful to damage the connector FPCB.

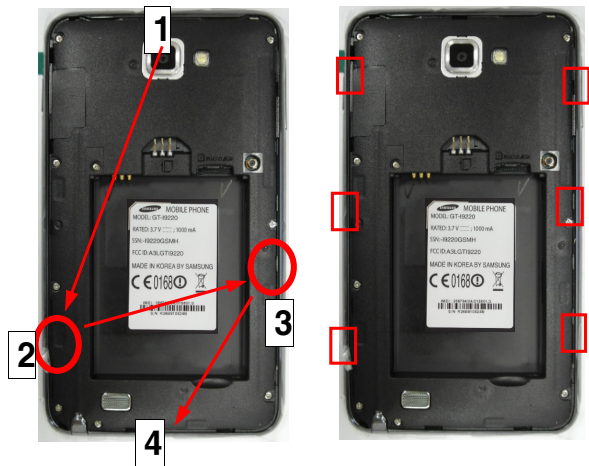
5



Connect all the connector on the PBA.
Connect the cable on the PBA.

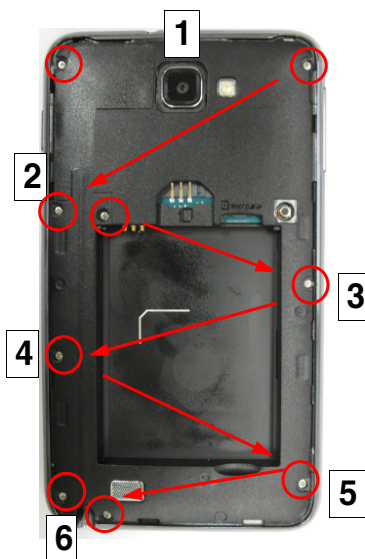
Be careful to damage the cable.

6



Assemble the Rear and the Front.
(Follow the order)
Hook at the 6 points.

7



Screws at 9 points.
(Torque: 1.0 ± 0.1 kgf.cm)
(Size: M1.4*L3)

DO NOT MAKE SCRATCH ON THE REAR.