

让我们以 Note S 为例子。

Let' s take Note S as an example.

刷机前先下载以下文件

Please download these files before flash it.

NOTE-S ROM link:

https://mega.nz/#!BMhizKKZ!RmQgQbxi-ukawzjO8GnK2FreCbGMjkYMPCaZVLo1C_w

Tool link:

https://mega.nz/#!EFJGgSTR!1j_VQ85ldBDaKCKCyDQrIrsWI0g7PpD541TWRNRMmu0

Driver of WIN7/8 :

https://mega.nz/#!5FJliDyL!eQtADh3JR52vbGIgMEUToFp7s_GZMhiV1tP0fvDylGE

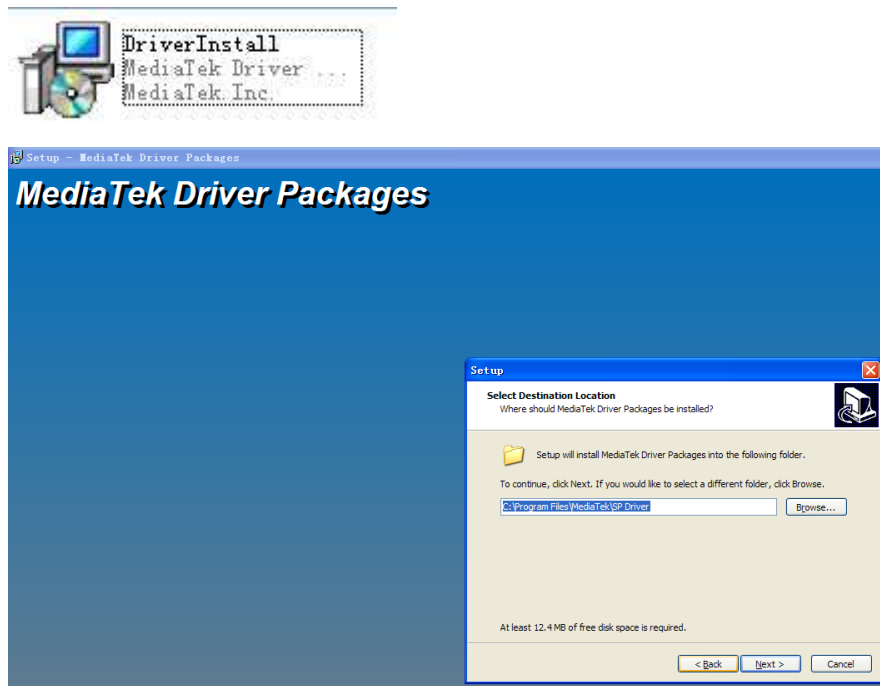
WIN7/WIN8 的系统先装驱动，下载下来的驱动解压后选择对应的安装：

For windows7/8 system, please download the driver first. Unzip the file and then install it into your computer.



打开文件夹，双击安装程序安装

Open the folder, double click to install the driver.



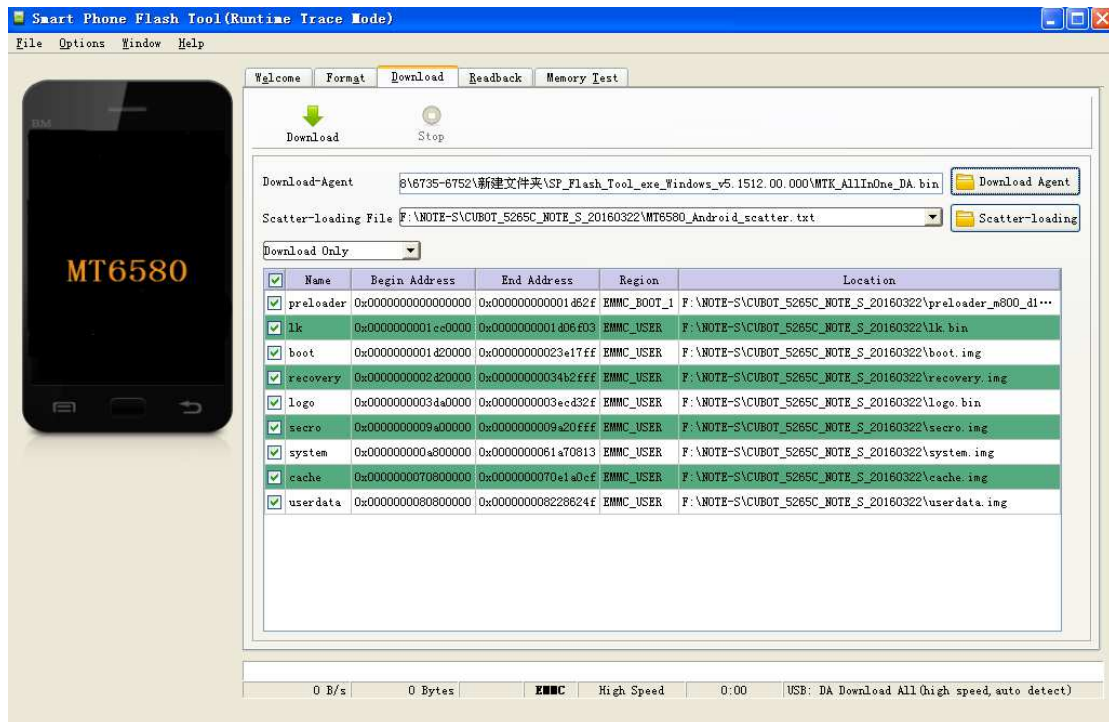
驱动安装完打开刷机工具，解压后的打开文件夹：

After the driver has been installed, please open the flash tool, unzip it and then open the file as below.



打开工具：

Open the tool:



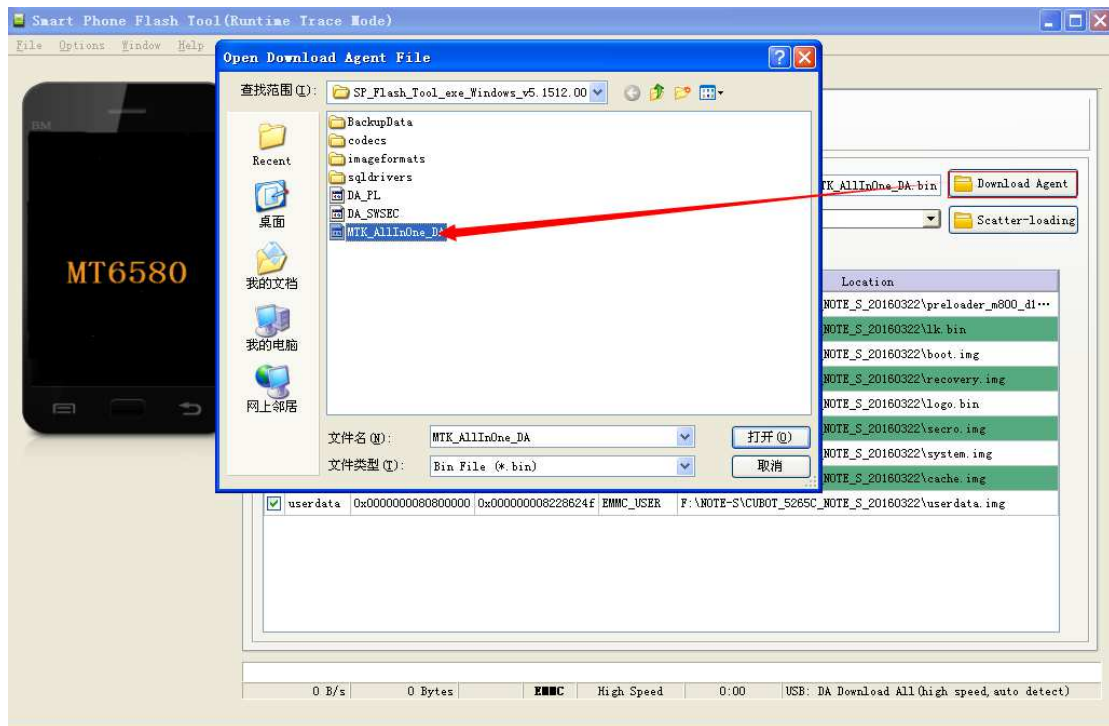
导入第一个文件，在工具里

Select the first file in the tool

SP_Flash_Tool_exe_Windows_v5.1512.00.000

找到 MTK_AllInOne_DA 导入

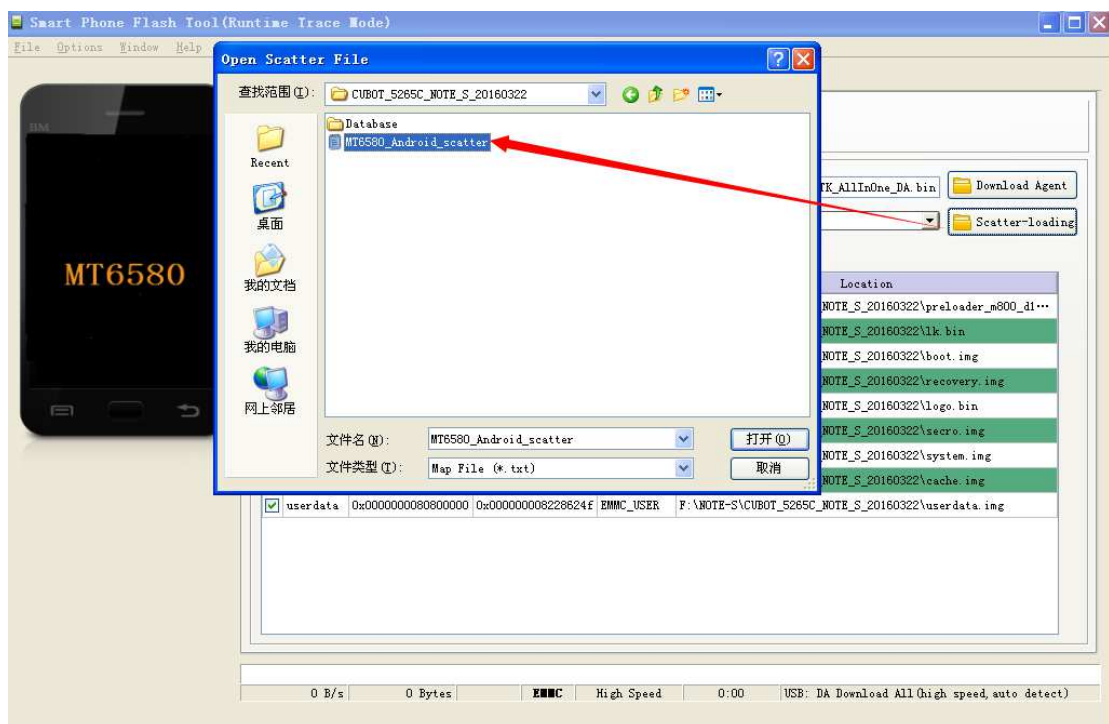
Find the "MTK_AllInOne_DA" file and insert it.



导入第二个文件，在 ROM 包里解压出来的文件夹找到

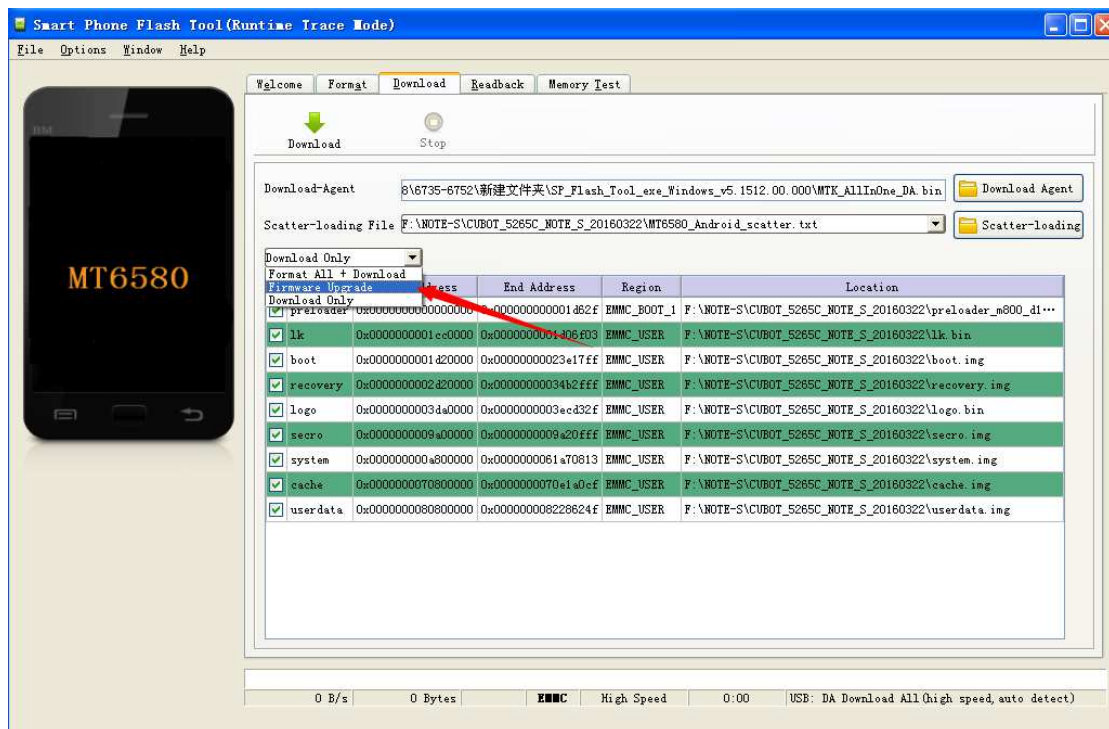
MT6580_Android_scatter 导入

Insert the second file, find "MT6580_Android_scatter" file in the unzip ROM folder and insert it.



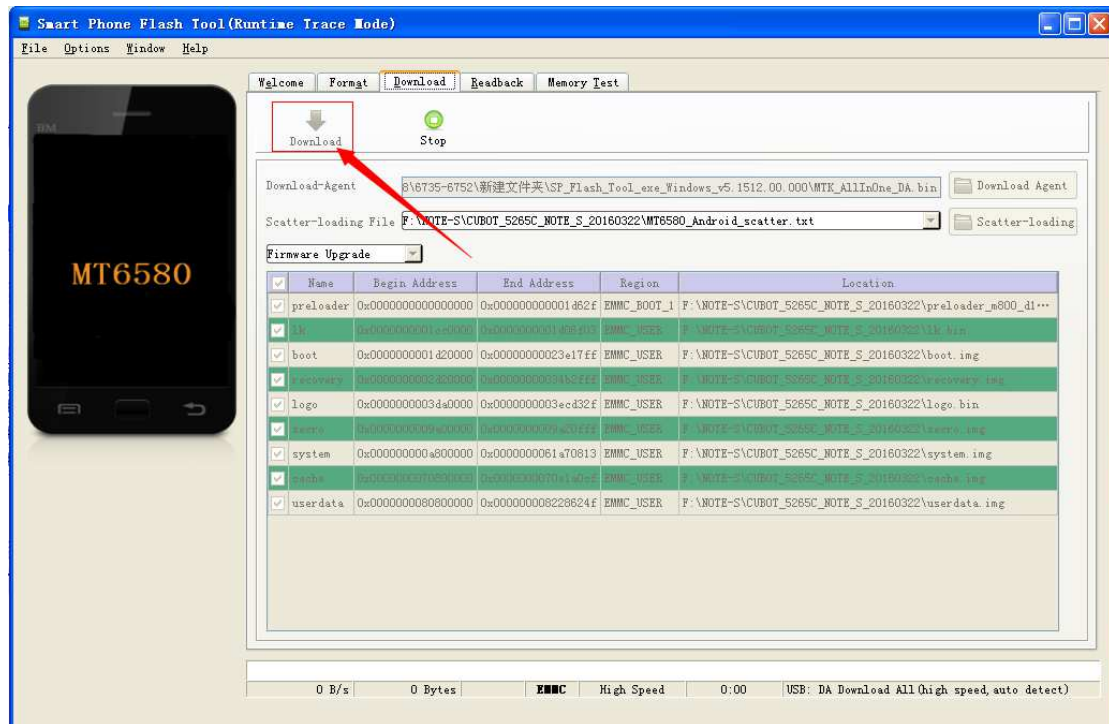
选择 Firmwar Upgrade:

Select Firmwar Upgrade:



点击 Download

Click Download

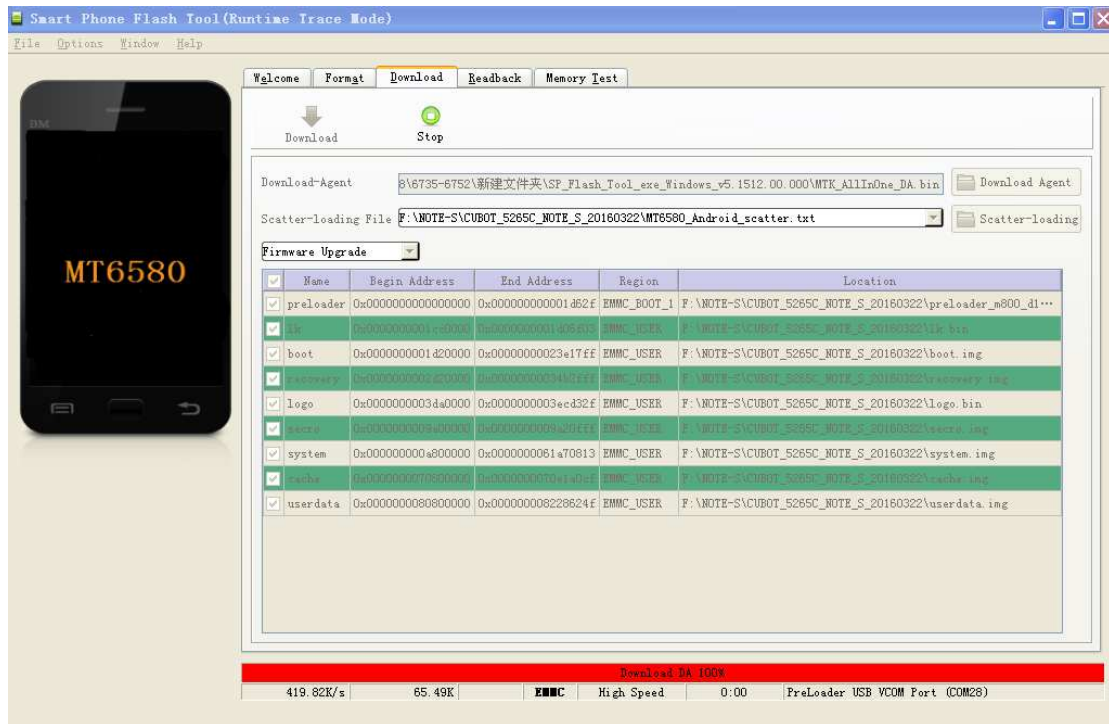


这样工具就设置完全了

手机在关机状态下，电池保持 20%以上的电量，连上电脑

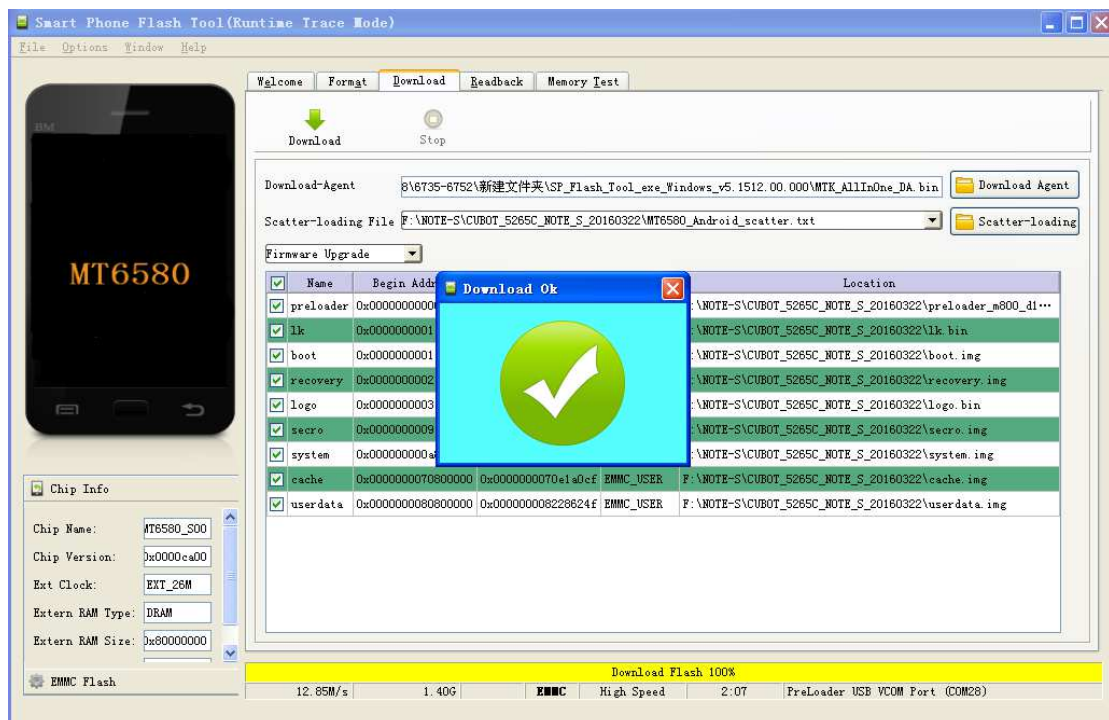
Till now, the tool has been set completely.

Please power off the phone when it is above 20% power, then connect with computer.



这样就是开始刷机了

Start to flash the phone.



直到黄色进度条到 100%，弹出 Download OK 这样刷机就完成了

The flash progress will be done after the yellow bar up to 100% and the Download OK frame show up.