

[👤 \(https://forum.hovatek.com/usercp.php\)](https://forum.hovatek.com/usercp.php)[🔔 \(0\) \(https://forum.hovatek.com/alerts.php\)](https://forum.hovatek.com/alerts.php)[✉️ \(0\) \(private.php\)](https://forum.hovatek.com/private.php)[🔗 \(https://forum.hovatek.com/member.php?action=logout&logoutkey=76bd525799aaeff0b89fdb94ac0dc336\)](https://forum.hovatek.com/member.php?action=logout&logoutkey=76bd525799aaeff0b89fdb94ac0dc336)[💬 Ask Question \(newthread.php?fid=101\)](https://forum.hovatek.com/newthread.php?fid=101)**Telegram Channel:** Join the discussions @ t.me/Hovatek (<https://t.me/Hovatek>)Hovatek Forum (<https://forum.hovatek.com/index.php>)/ MOBILE PHONES HELP SECTION (<forum-75.html>) / Android (<forum-76.html>)**Thread Rating:** ★ ★ ★ ★ ★[💬 New Reply \(newreply.php?tid=31476\)](https://forum.hovatek.com/newreply.php?tid=31476)**Thread Modes**

## [Tutorial] How to use QFIL to flash to a single partition on Qualcomm

**X3non** (<https://forum.hovatek.com/user-1116.html>)

(user-1116.html) Hovatek Representative

Posts: 19,017

Threads: 557

Joined: Jul 2014

Reputation: **326** ([reputation.php?uid=1116](https://forum.hovatek.com/reputation.php?uid=1116))

07-12-2019, 10:12 AM

**Unread post #1** ([thread-31476-post-183332.html#pid183332](https://forum.hovatek.com/thread-31476-post-183332.html#pid183332))

This is a step-by-step guide on how to use Qualcomm Flash Image Loader (QFIL) to flash a single partition on Qualcomm smartphones and tablets. QPST contains this QFIL and other tools. It enables you flash / backup from Qualcomm CPU without a box or dongle. To know more about QFIL, read this post (<https://forum.hovatek.com/thread-30642-post-180764.html#pid180764>)

### Requirements

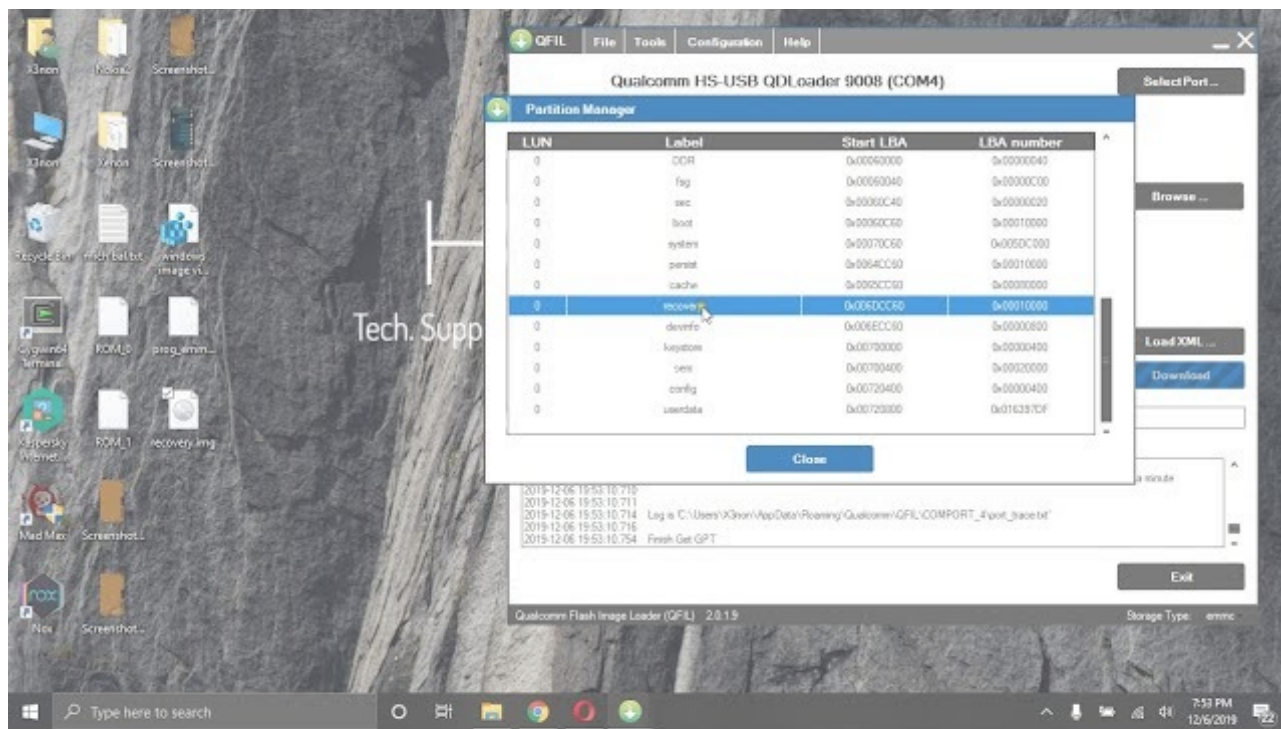
- Download and install Qualcomm USB drivers (<https://forum.hovatek.com/thread-16965.html>)
- Download and install QPST (<https://forum.hovatek.com/thread-22467.html>)
- Boot the device into Emergency Download Mode / EDL Mode (<https://forum.hovatek.com/thread-21791.html>)
- Firehose Programmer files; you can either get this from your firmware or search online or randomly try from our collection of firehose programmer files (<https://forum.hovatek.com/thread-25696.html>)
- PC
- USB cable



## How to flash a single file on a qualcomm android phone using QFIL

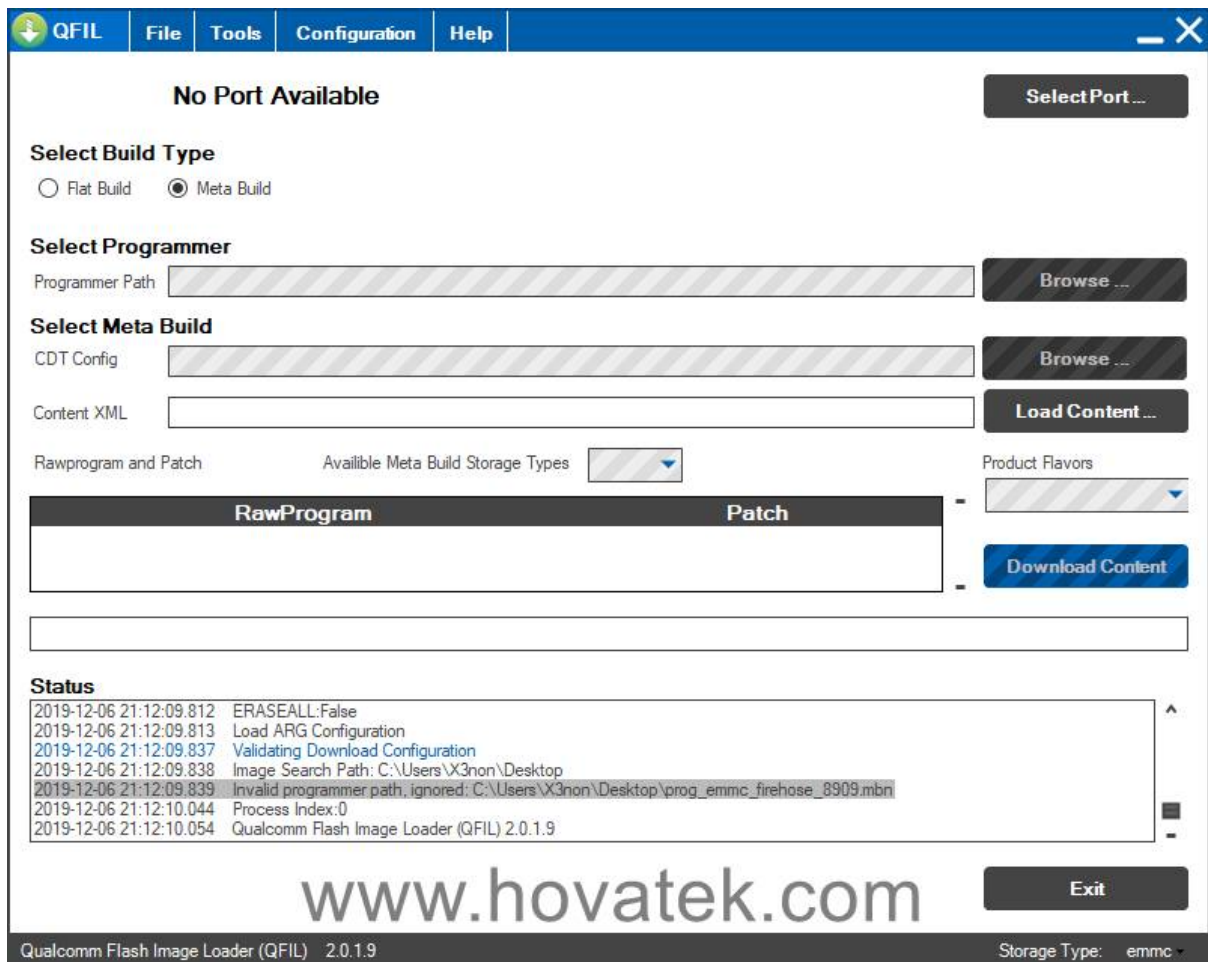
Follow the steps below to flash a single partition on a qualcomm android phone using Qualcomm Flash Image Loader (QFIL)

See the video tutorial below or at <https://youtu.be/MdknZvaTwl4> (<https://youtu.be/MdknZvaTwl4>)

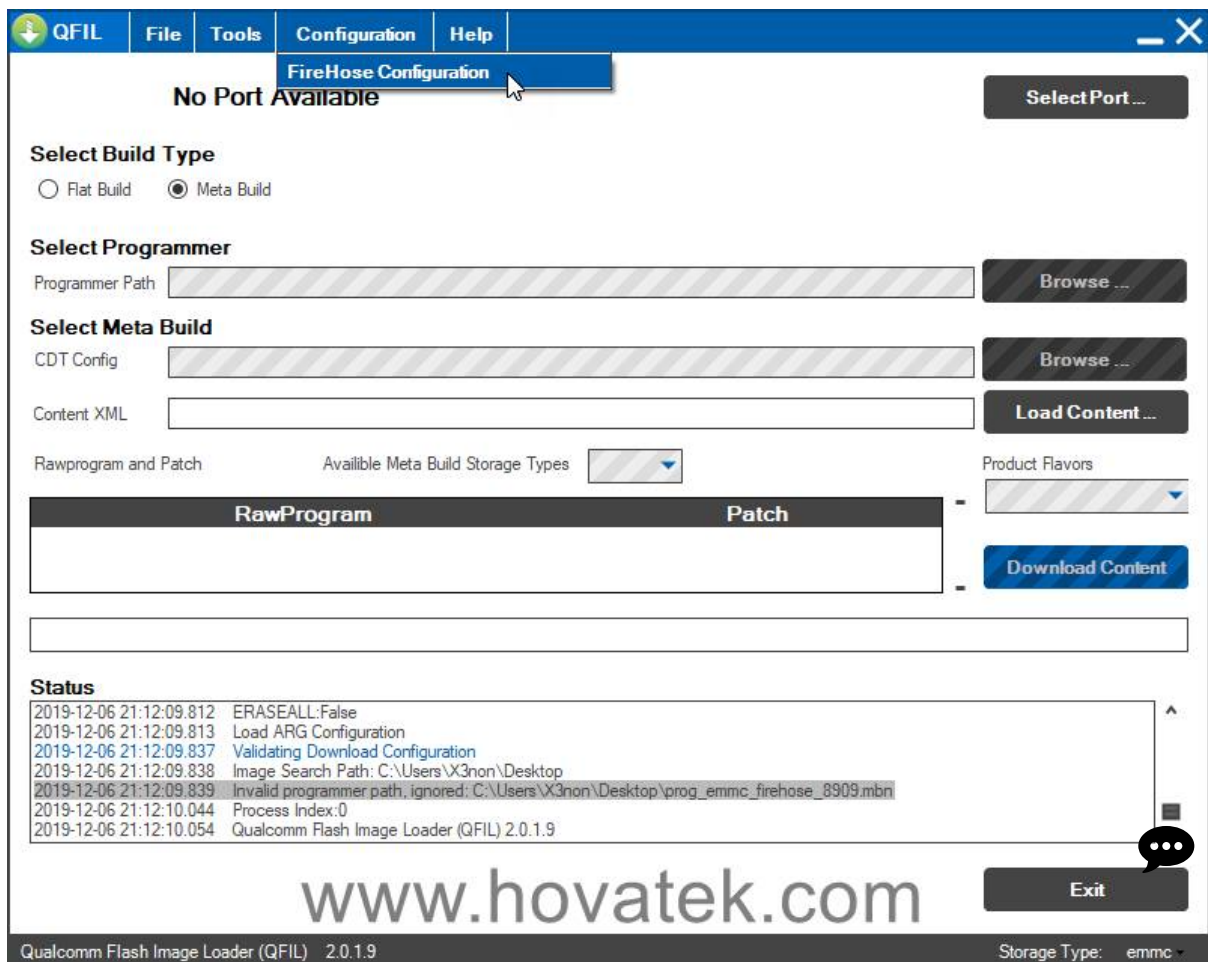


### 1. Launch QFIL

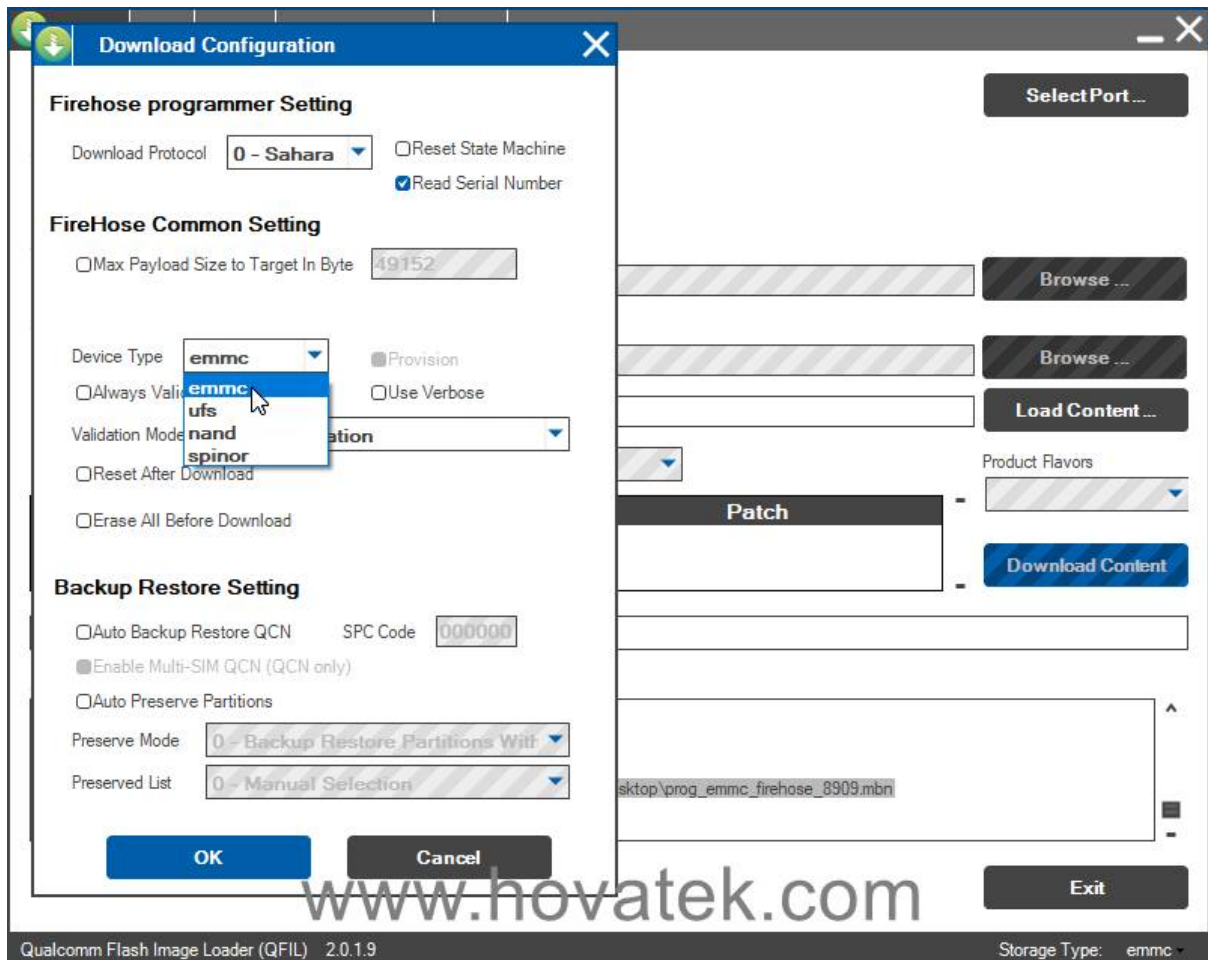




## 2. Click Configuration > FireHose Configuration

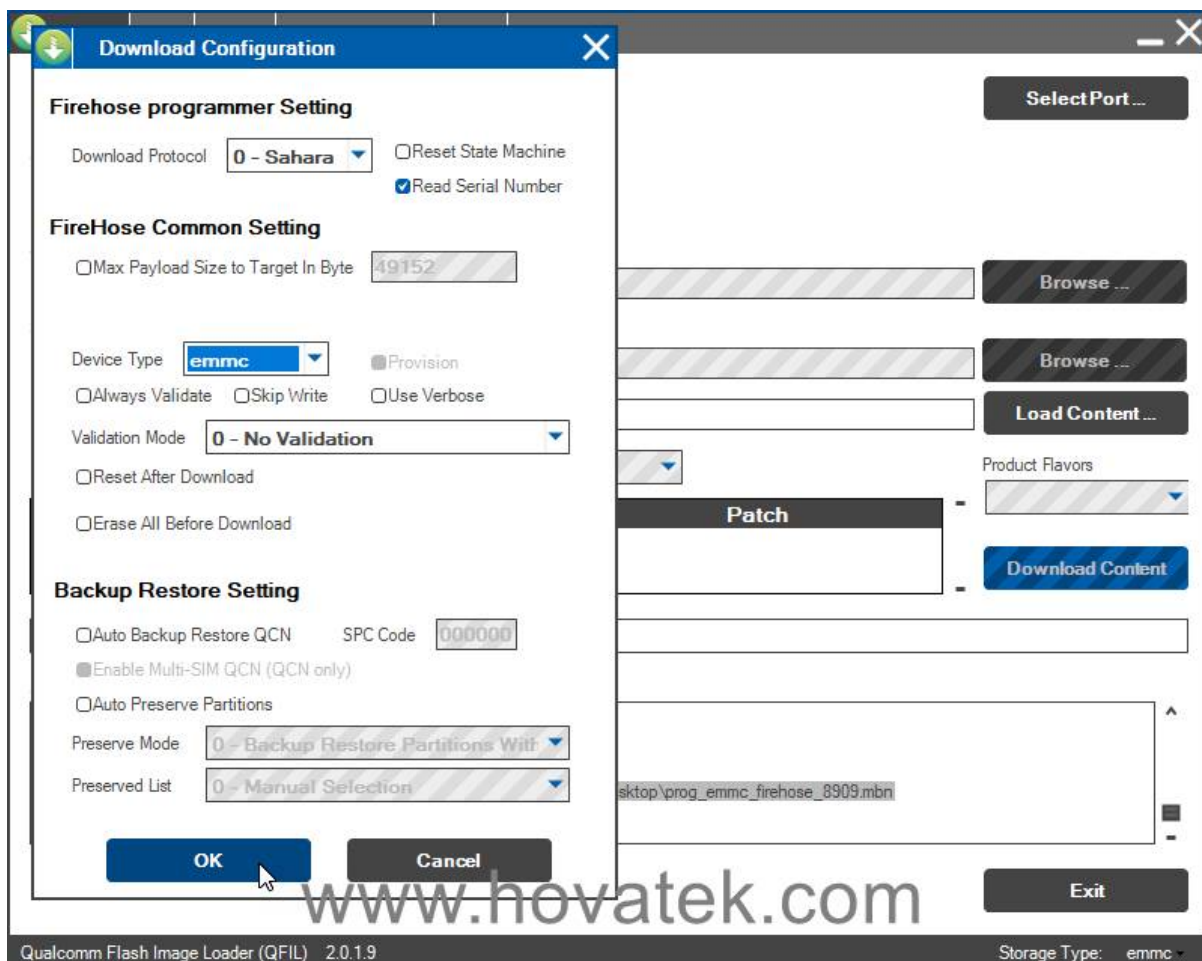


3. In the Download Configuration window that opens next, click the drop down bar beside device type and select your device storage



4. Click OK

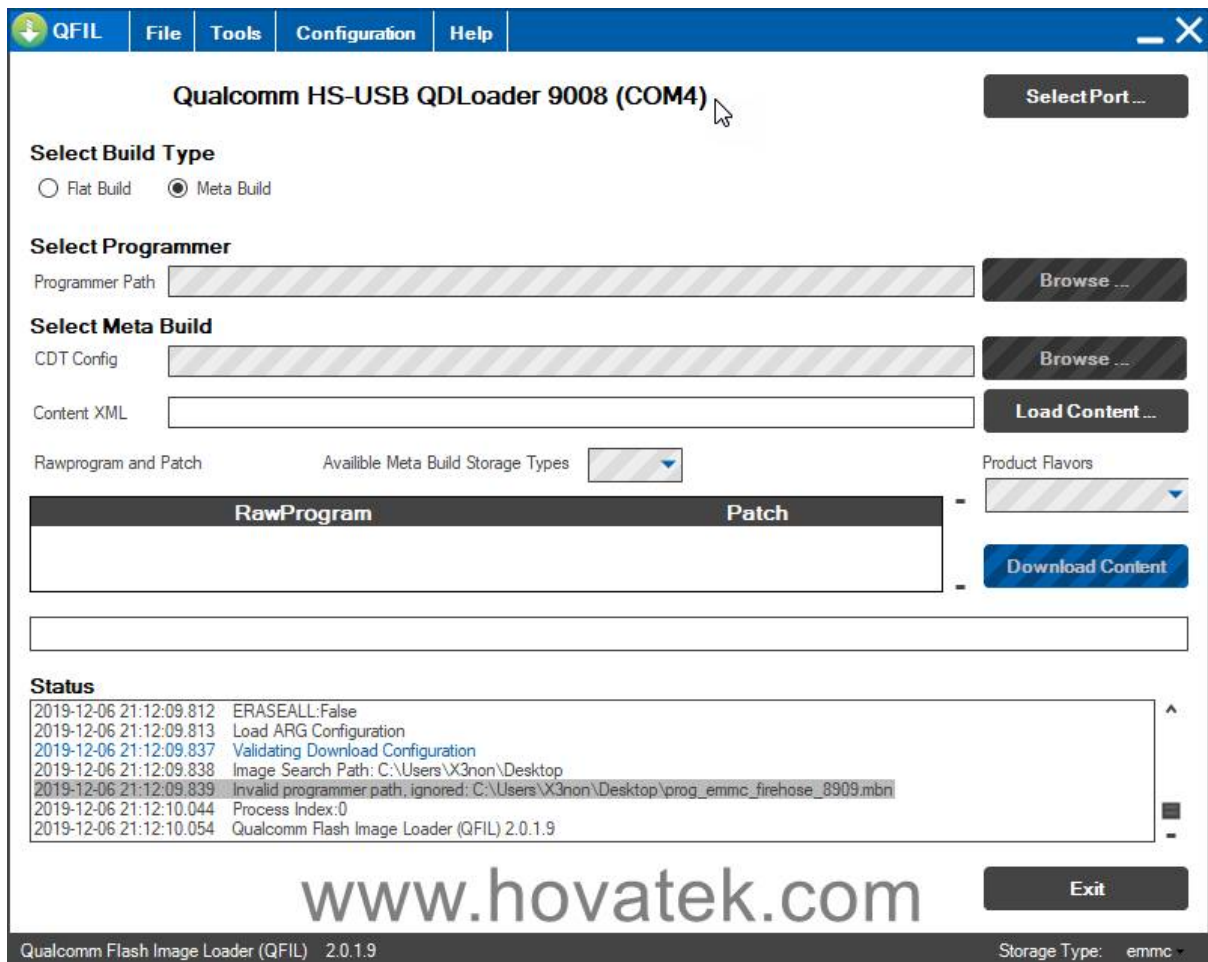




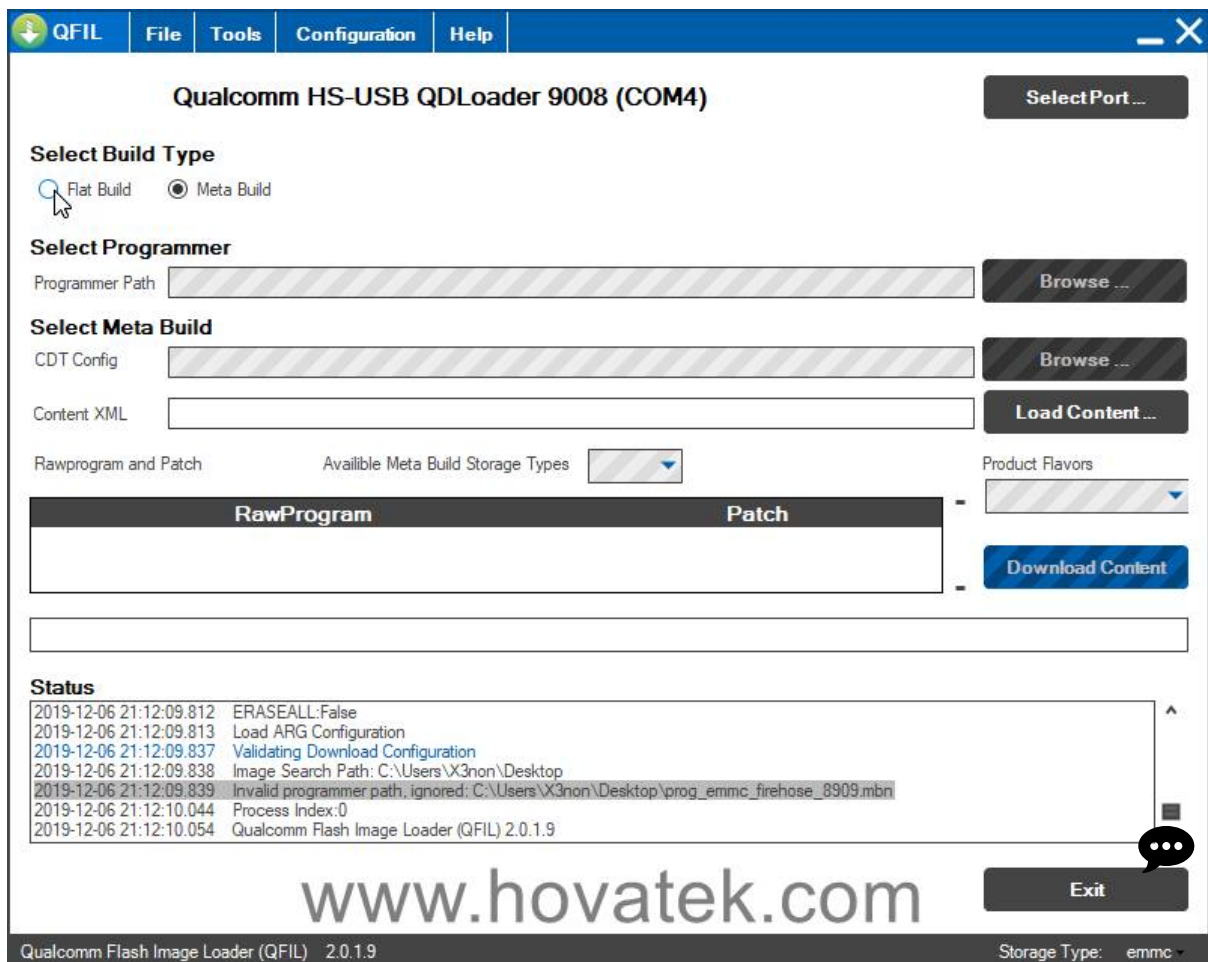
5. Connect the device to the PC while in EDL Mode (device should be in EDL before connecting to pc). No Port Available should change to Qualcomm HS-USB QDLoader 9008



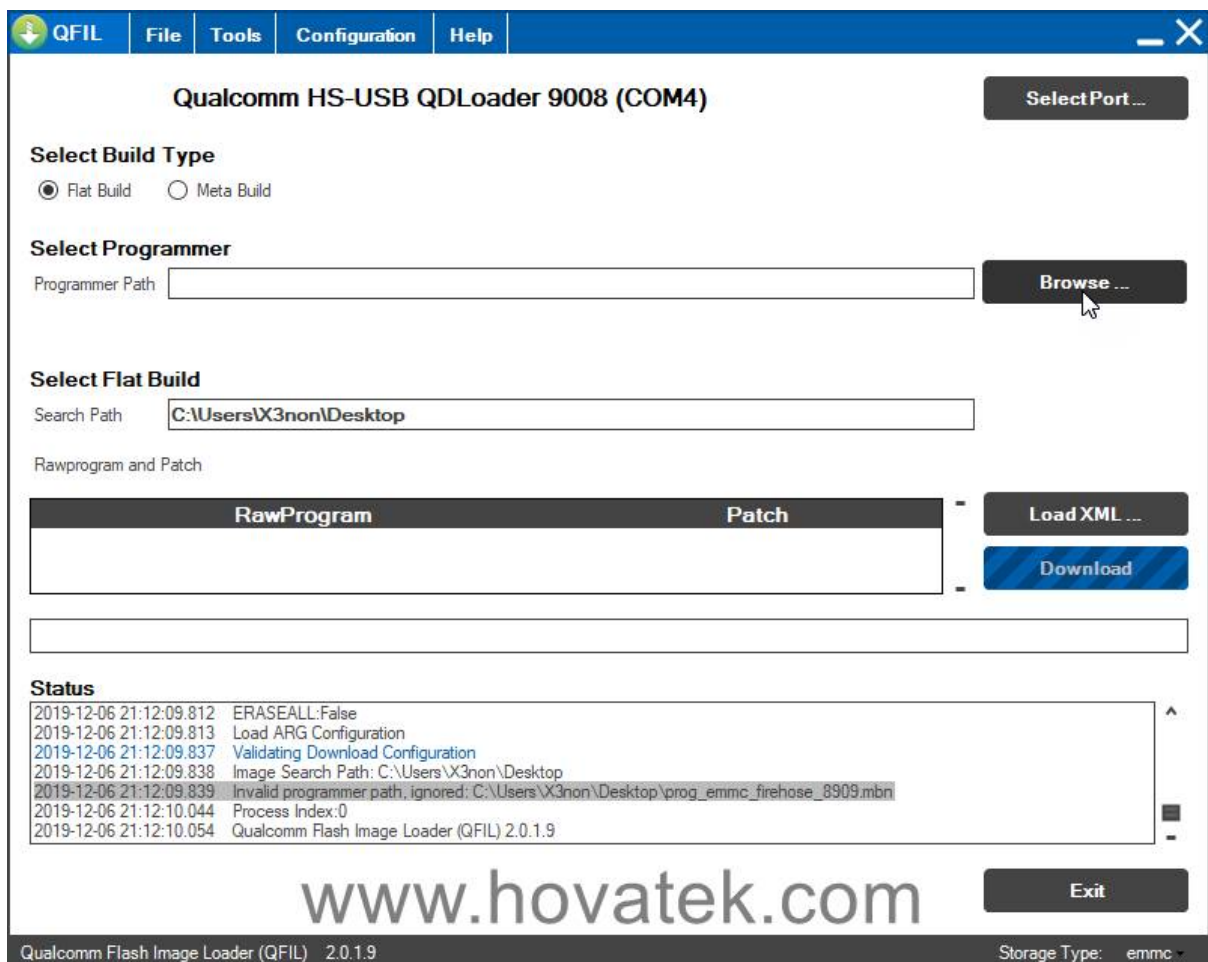




6. Under Select Build Type, tick Flat Build

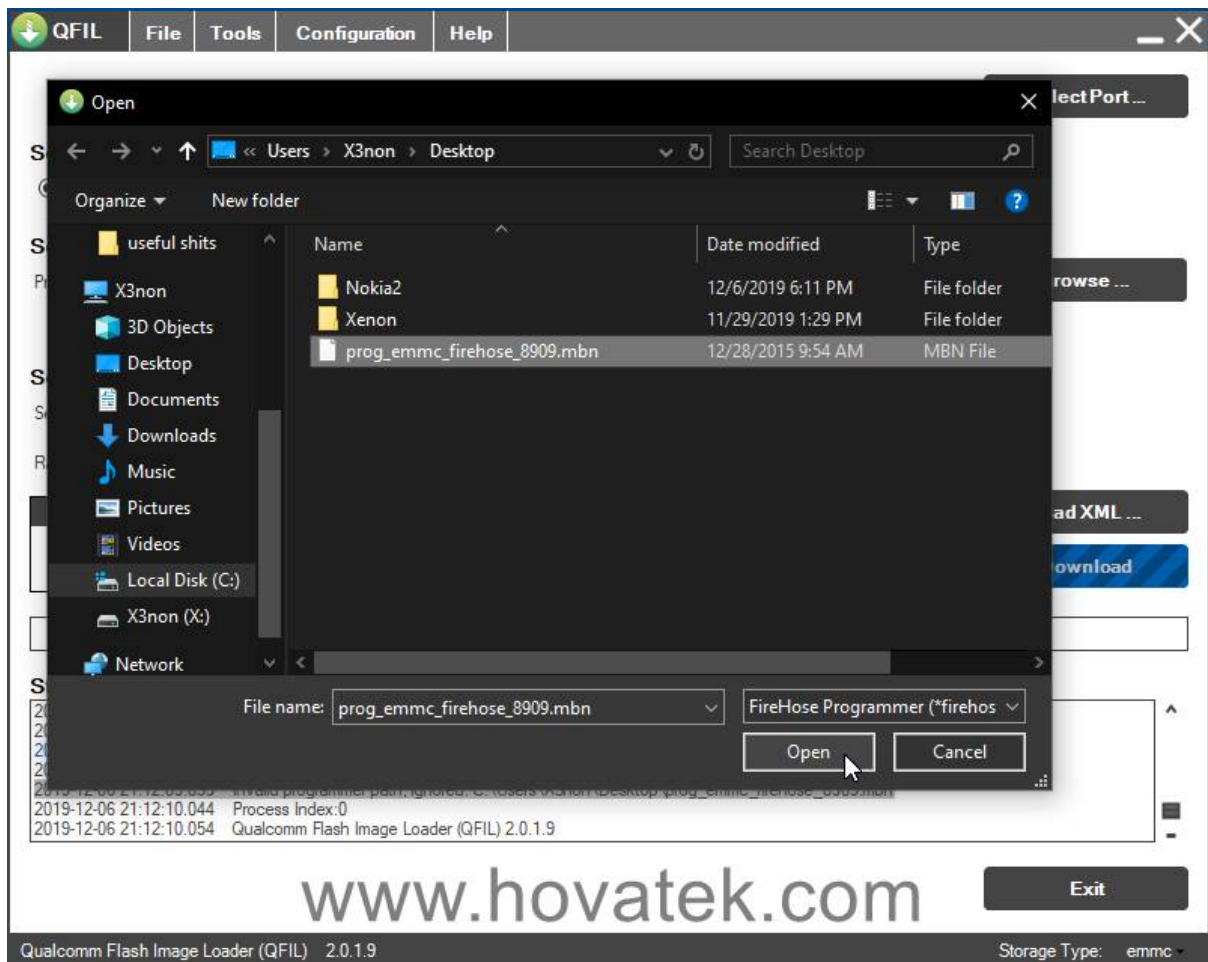


## 7. Under Select Programmer, click Browse

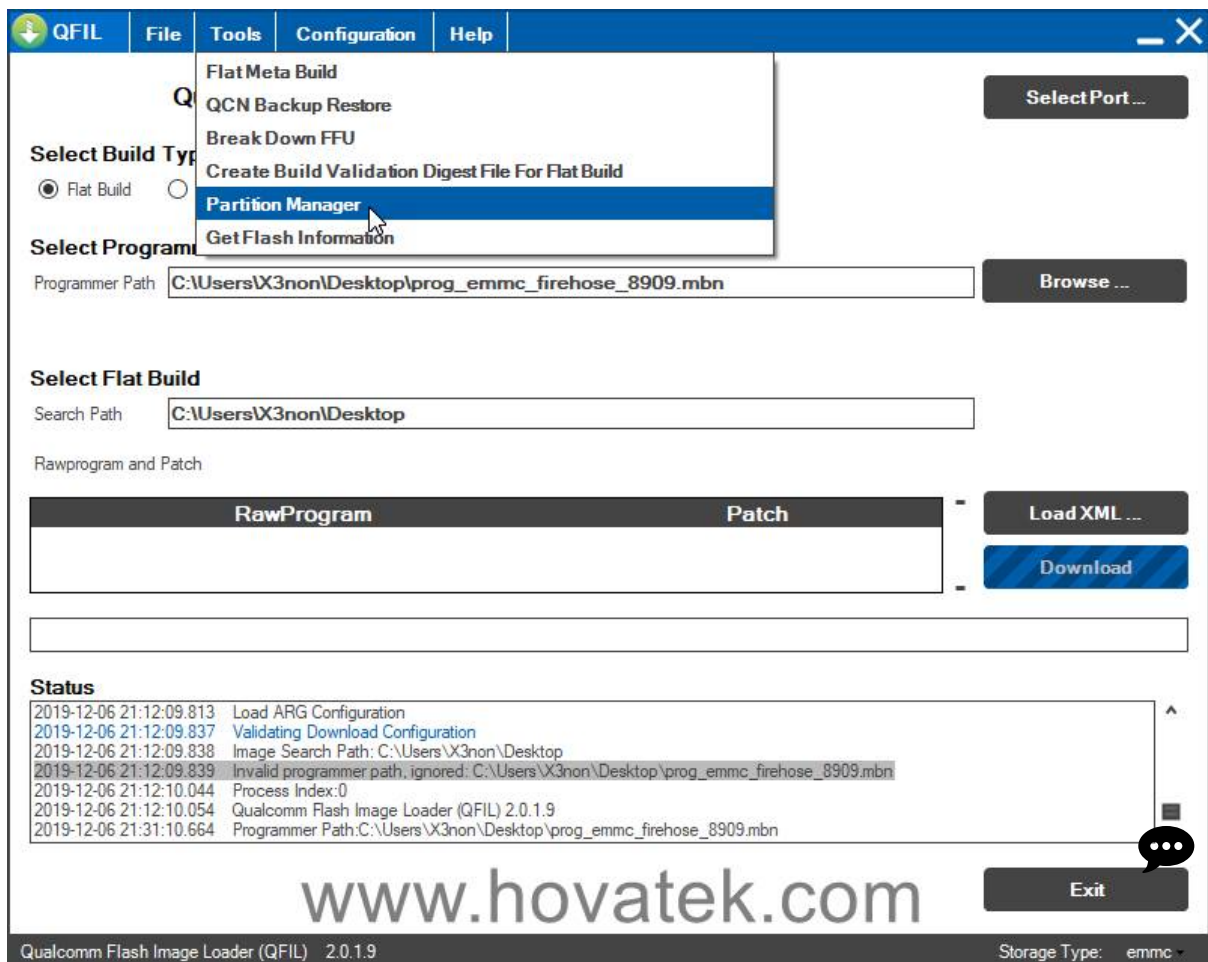


8. In the Window that pops up, highlight the loader file (usually named prog\_emmc\_firehose\_\*\*\*\*.mbn) and click Open



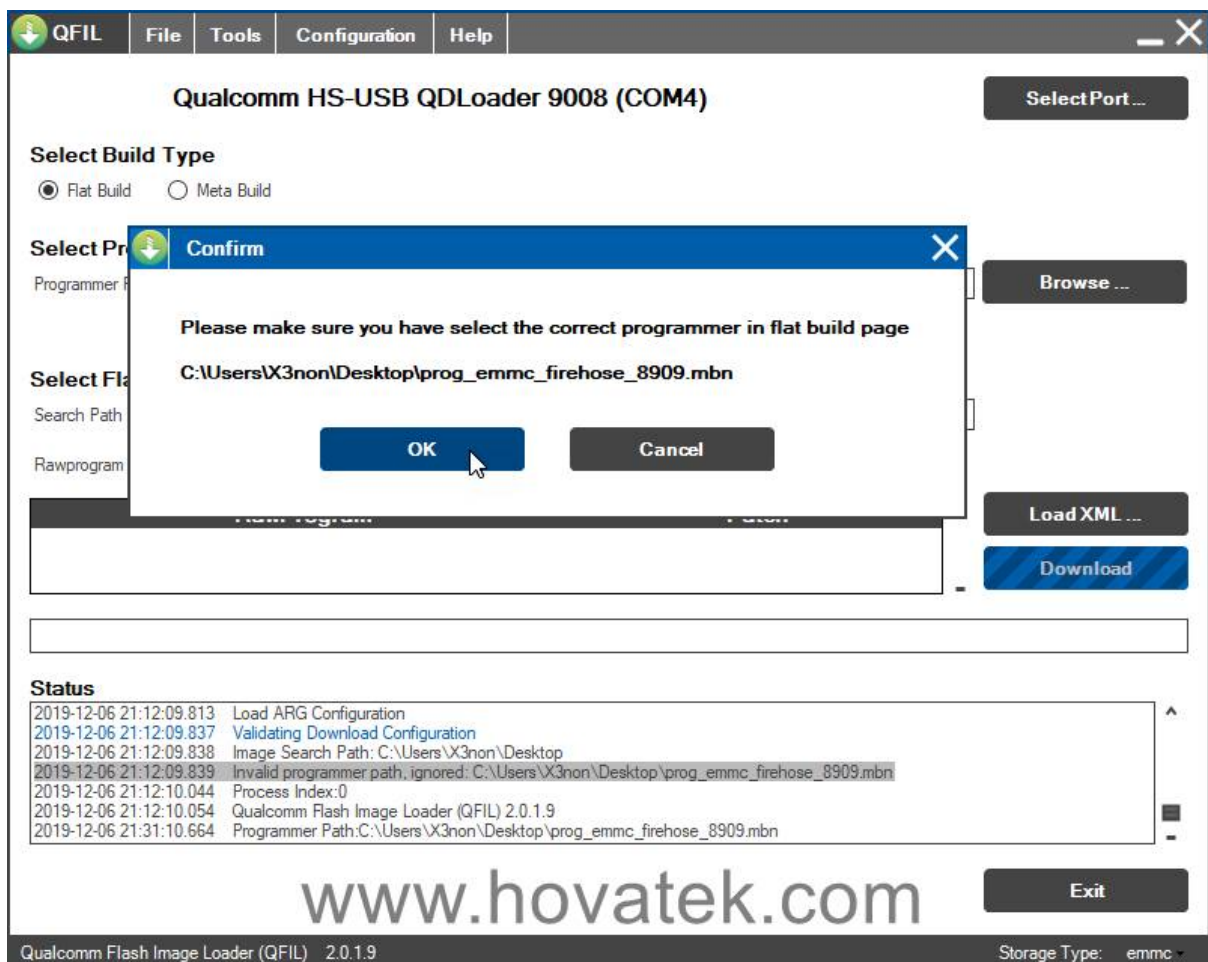


9. Click Tools > Partition Manager

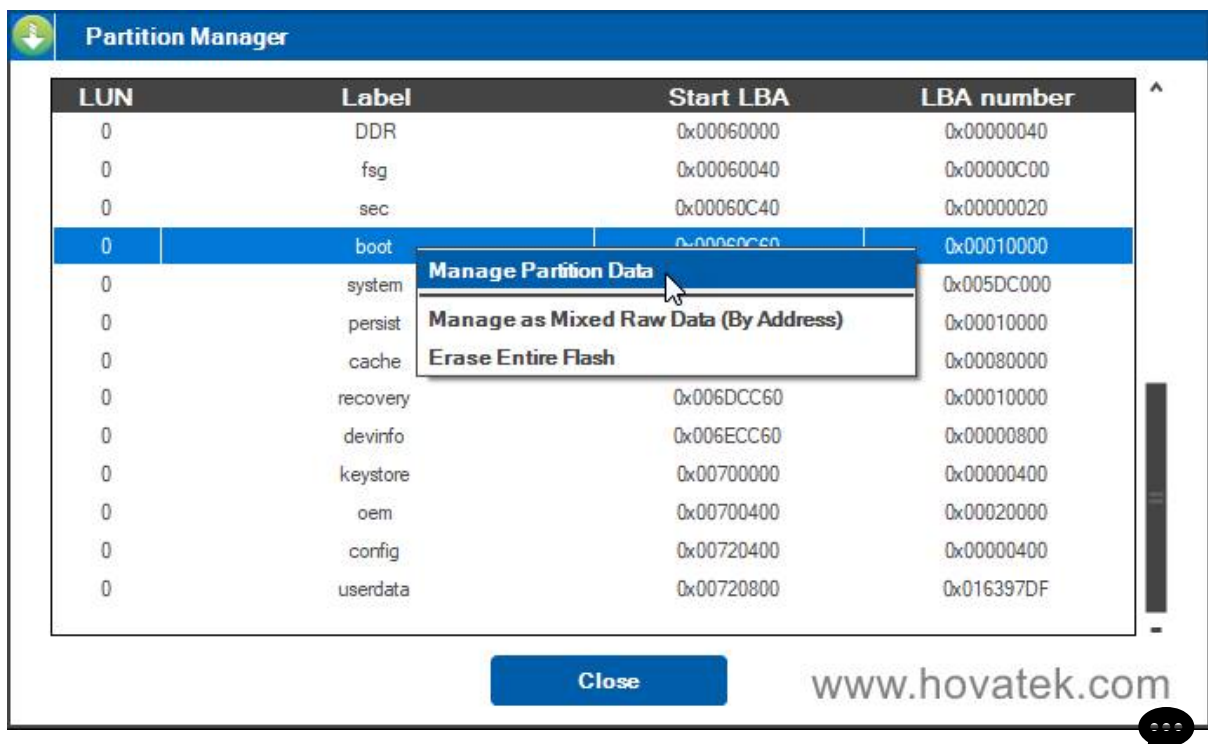




10. In the confirm window that pops up, click OK



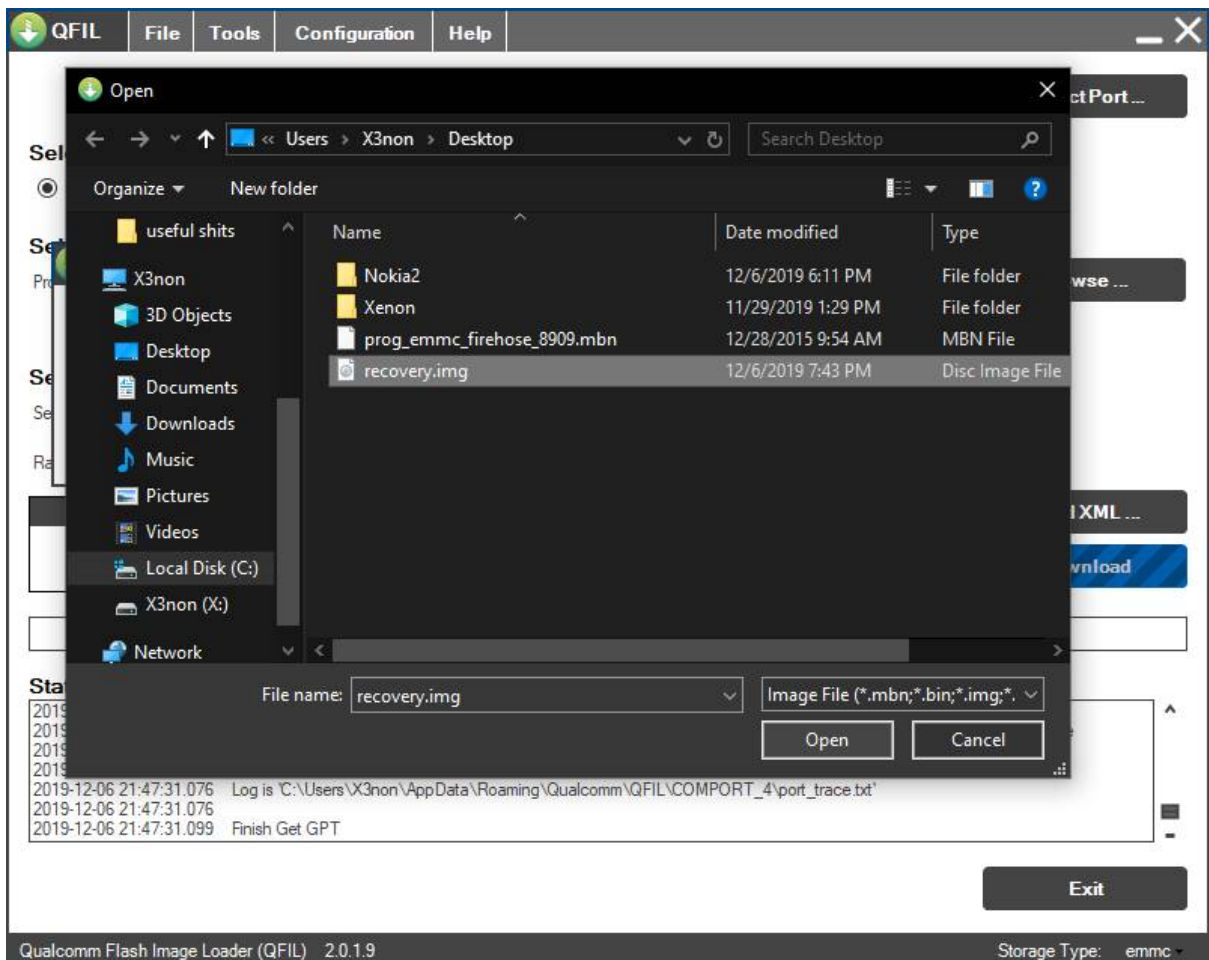
11. Another Window will automatically pop up, right click on the partition you wish to backup then select Manage Partition Data



12. A new window will pop up, click LoadImage...

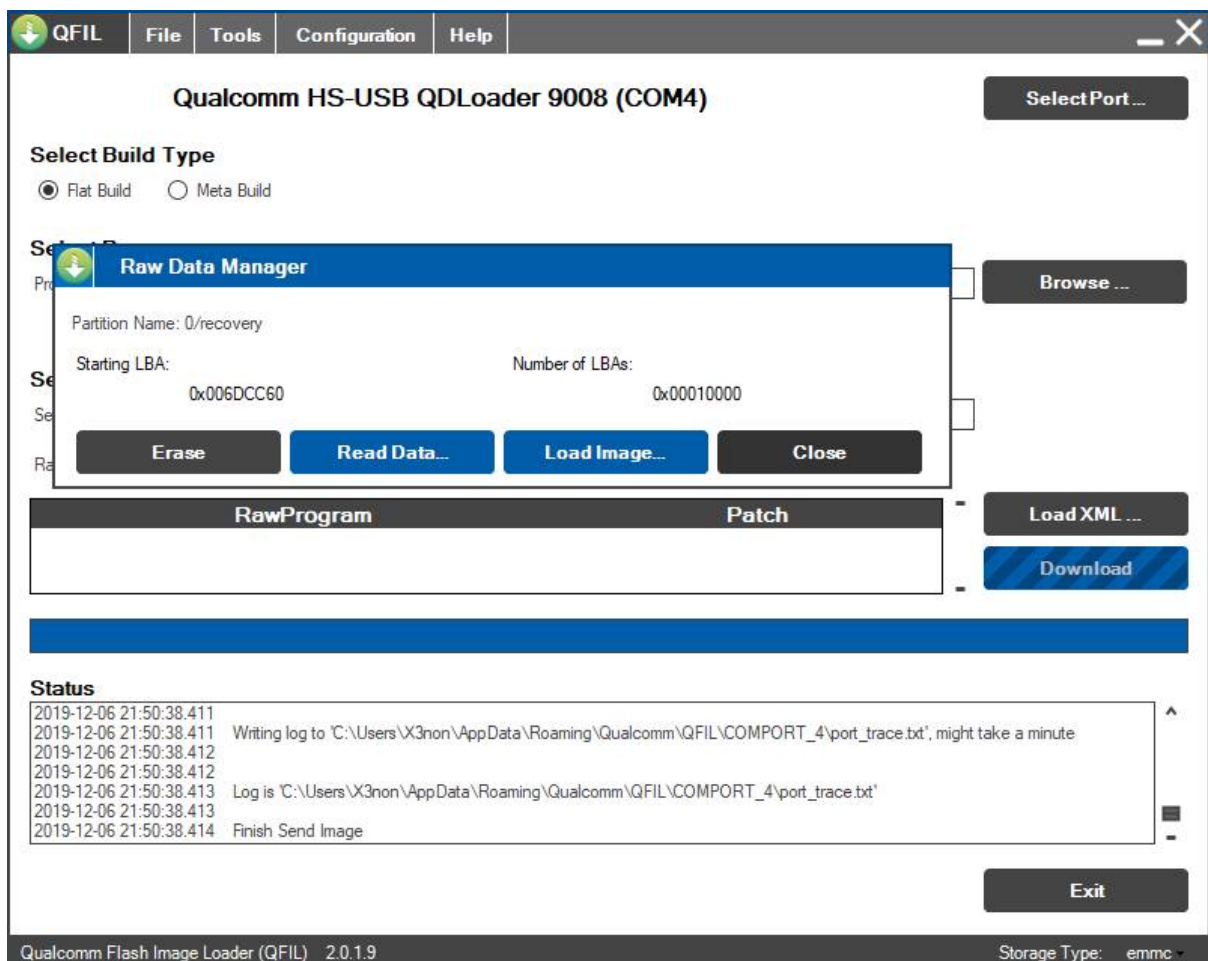


13. In the new window that pops up, select the file you wish to flash then click Open

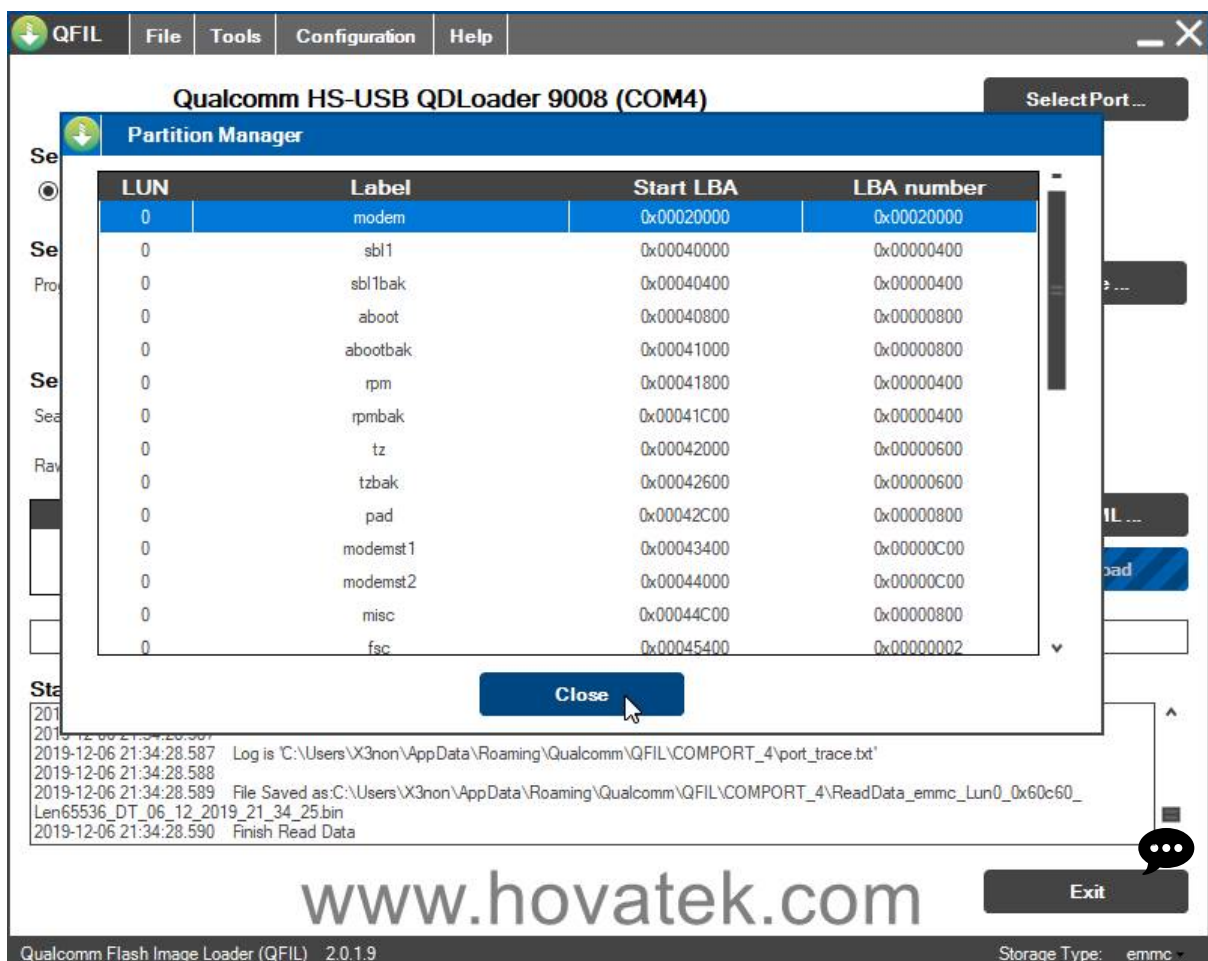


14. You should get "Finish Send Image" once QFIL has successfully flashed the image onto the said partition. Ensure to scroll up the logs and check for error messages, just to be sure flashing is successful

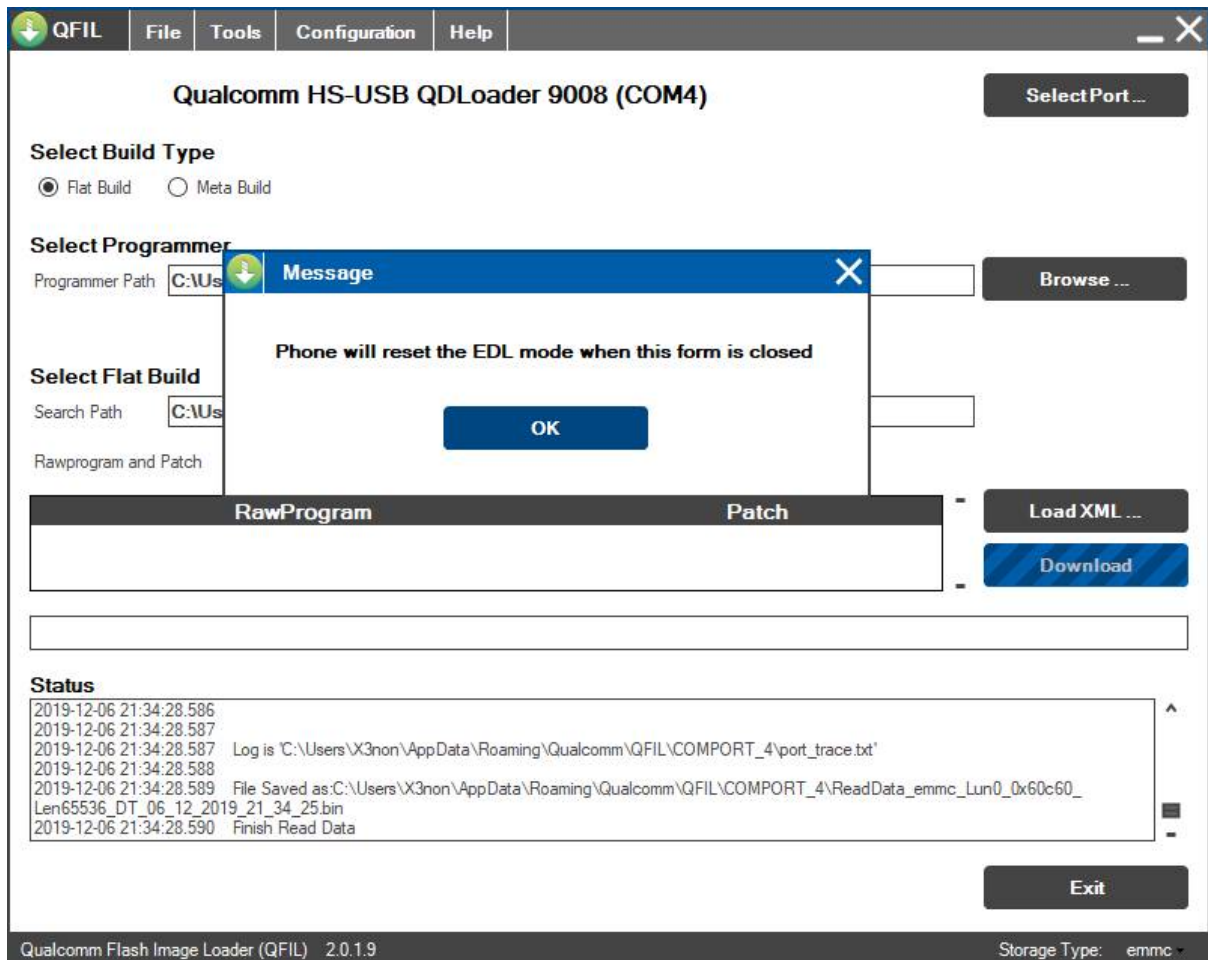




15. Once done, click Close on Partition Manager window



16. A new window will pop up, reminding you that your device will be reset from EDL mode back to homescreen, click OK



### Important notes

- If you encounter errors while trying to use QFIL standalone, ensure to retry using QFIL within QPST
- Some Qualcomm firmware do not contain programmer files (prog\_emmc\_firehose\_\*\*\*\*.mbn). If you can't find programmer file for your device model, you can (in severe cases) use the programmer file for a Qualcomm phone with the same chipset as yours. If you get the Sahara Fail error then try a different programmer file for your chipset type
- If you still have No Port Available after connecting the phone then its either the phone isn't in EDL mode or you've not installed drivers for the phone
- The exact button combo for booting into EDL mode varies across Qualcomm devices so ensure to run a search around booting your model into EDL
- This tool is specifically for the Qualcomm chipset, it won't work for devices running other chipset type other than qualcomm
- QPST is owned by Qualcomm Technologies Incorporated so credits to them for this tool

### Video Transcript

