



HUAWEI

**BTV-DL09 EMUI5.0+Android7.0 rollback
to EMUI4.1+Android 6.0
Operation instruction**

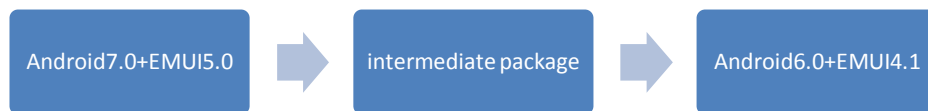


Huawei Technologies Co., Ltd.

All rights reserved

The instruction guides user to roll back from **Android7.0** to **Android 6.0**

- 1) Roll back operation includes **twice SD card update**, only through intermediate package **BTV-DL09C900B300** , like below:



- 2) Allow roll back to Huawei official stable release.

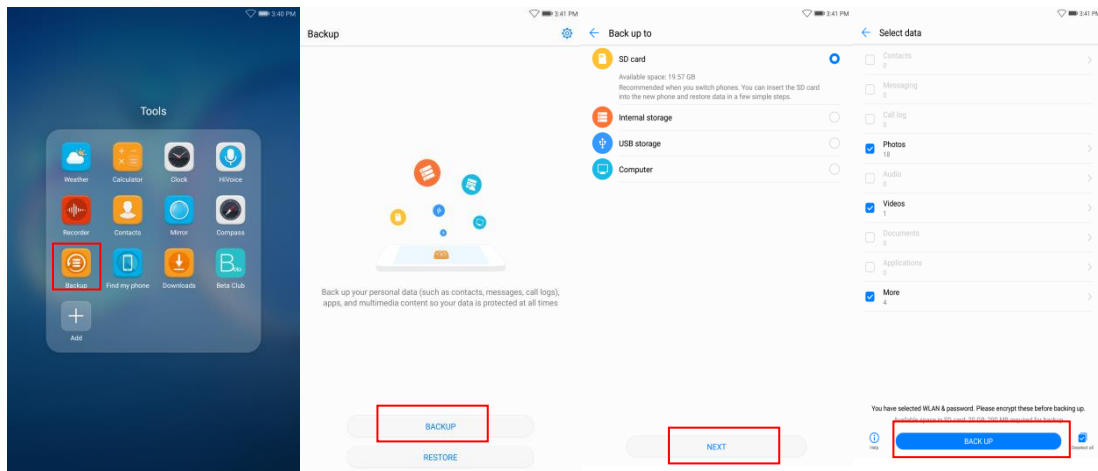
Precautions:

1. Make sure the current system version on your tablet is an official Huawei version based on Android 7.0. If your tablet has been updated with a non-official version, the rollback may fail and even cause unexpected problems.
2. Make sure your tablet system version has not been unlocked or rooted.
3. Your personal data will be erased during the rollback. Be sure to back up all your important data beforehand.
4. Prepare a micro SD card with available storage space at least 8 GB.
5. Make sure the battery level is higher than 30%.
6. The rollback includes two local ROM flashing procedures, first from Android 7.0 to the intermediate package version and then from the intermediate package version to Android 6.0.

Step 1: Back up data.

Your personal data will be erased during the rollback. Be sure to back up all your important data beforehand.

To back up data to your micro SD card, go to Tools > Backup, touch backup, and follow the onscreen instructions.



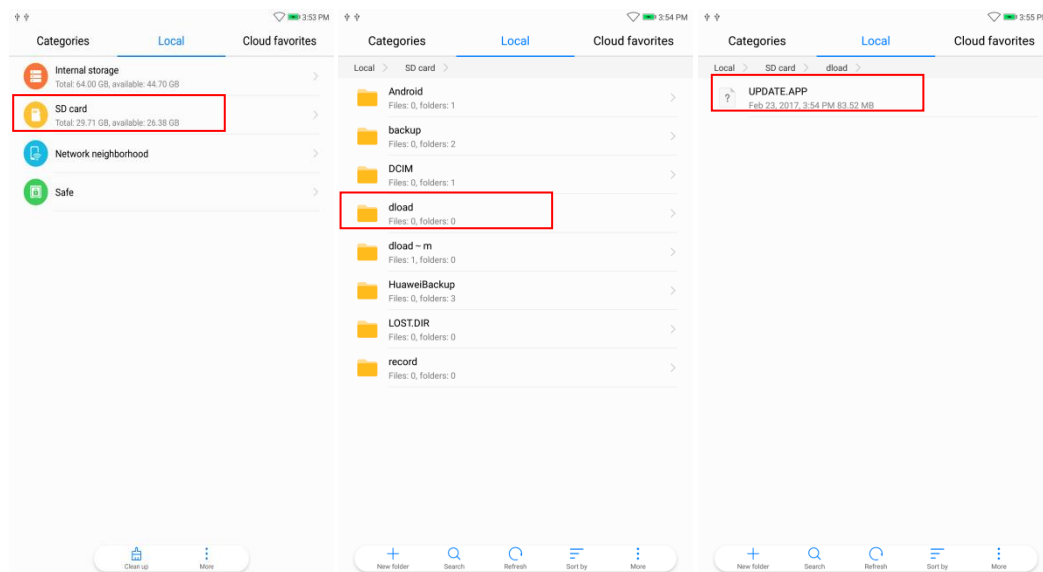
Step 2: Update your tablet to the intermediate package version.

Obtain the BTV-DL09 intermediate package (UPDATE.APP) by visiting the official EMUI website or calling the customer service hotline.

Load the UPDATE.APP package to the dload folder under your **micro SD card** root directory.

If there is no dload folder under the directory, please create one. **(Do not load the UPDATE.APP package to the internal storage.)**

When the tablet is powered off, press and hold the volume up, volume down, and power buttons simultaneously to enter forcible update mode. **Release the buttons only after the rollback starts.** Do not operate the tablet during the rollback.



Step 3: Confirm the intermediate package version.

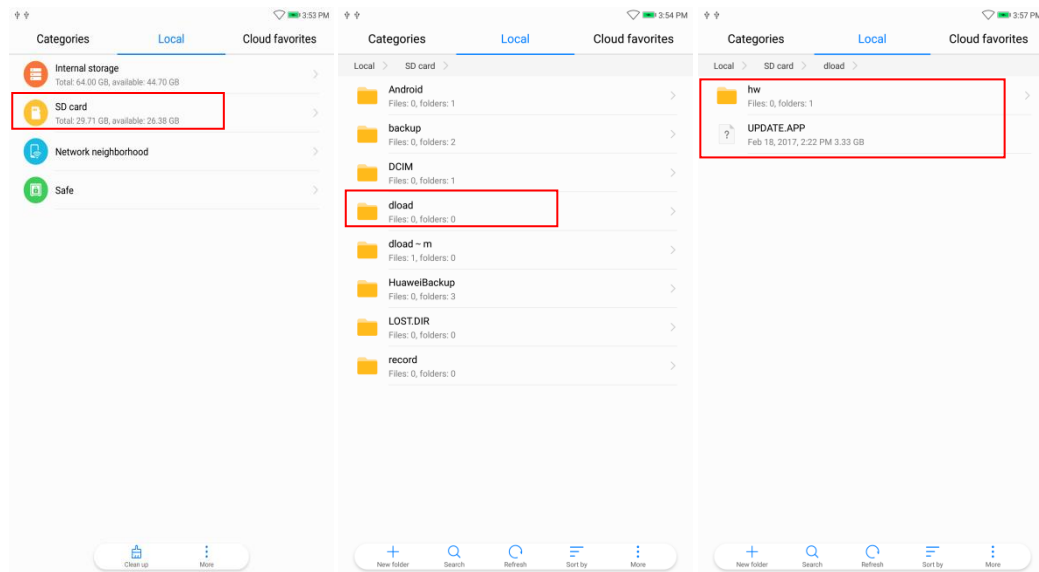
When the tablet is powered on, go to Settings > About tablet and check whether the displayed version number contains BTV-DL09C900B300.

Step 4: Update the tablet from the intermediate package version to Android 6.0.

Download the Android 6.0 full package for the BTV-DL09 from the EMUI official website.

Load the package to the dload folder under your **micro SD** card root directory. If there is no dload folder under the directory, please create one. (**Do not load the package to the internal storage.**)

When the tablet is powered off, press and hold the volume up, volume down, and power buttons simultaneously to enter forcible update mode. **Release the buttons only after the rollback starts.** Do not operate the tablet during the rollback.



Step 5: Confirm the system version and restore data.

When the tablet is powered on, go to Settings > About tablet and check whether the displayed EMUI version is EMUI 4.1 and Android version is 6.0.

Go to Tools > Backup, locate the desired backup record, and follow the onscreen instructions to restore.

