

Instruction of make flytouch ROM recover card

Edit: www.androidtime.com

1: Make Boot Sector to TF card

Open the folder winhexv, run the software WinHex.exe on your computer

Do as per follows instruction:

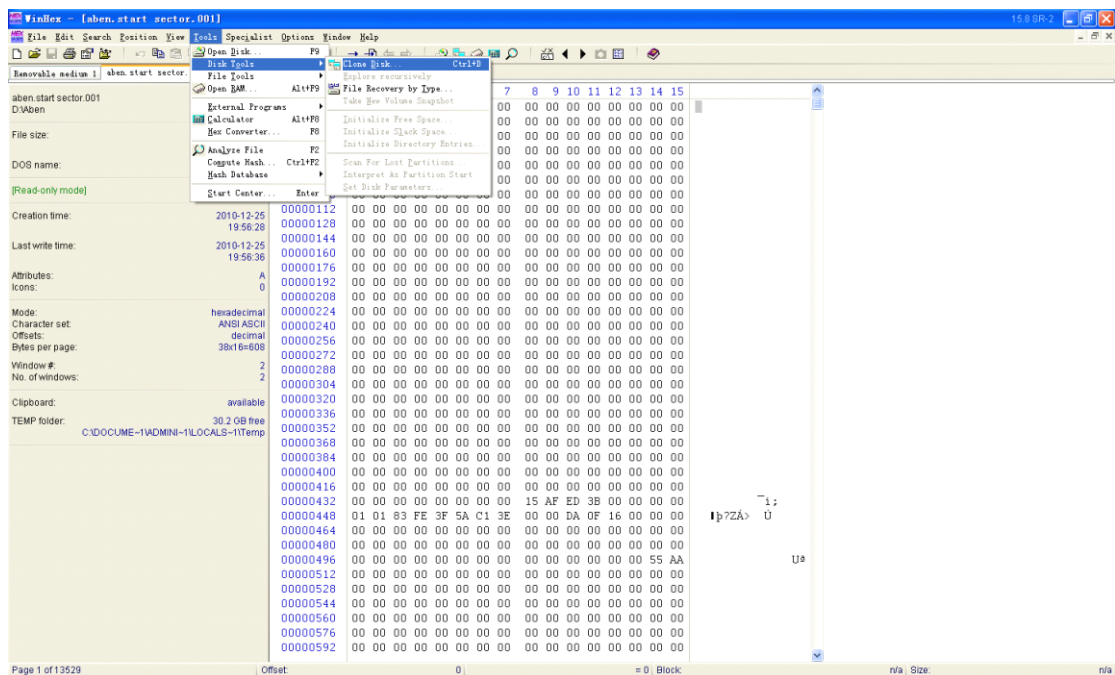
Tools->Disk Tools->Clone Disk->

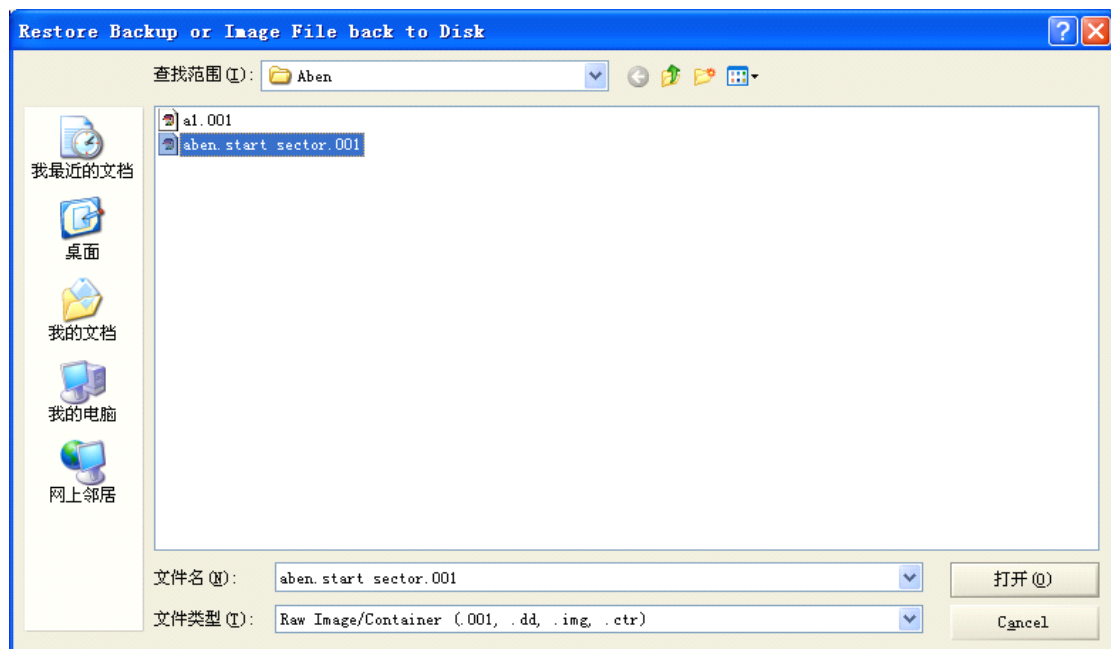
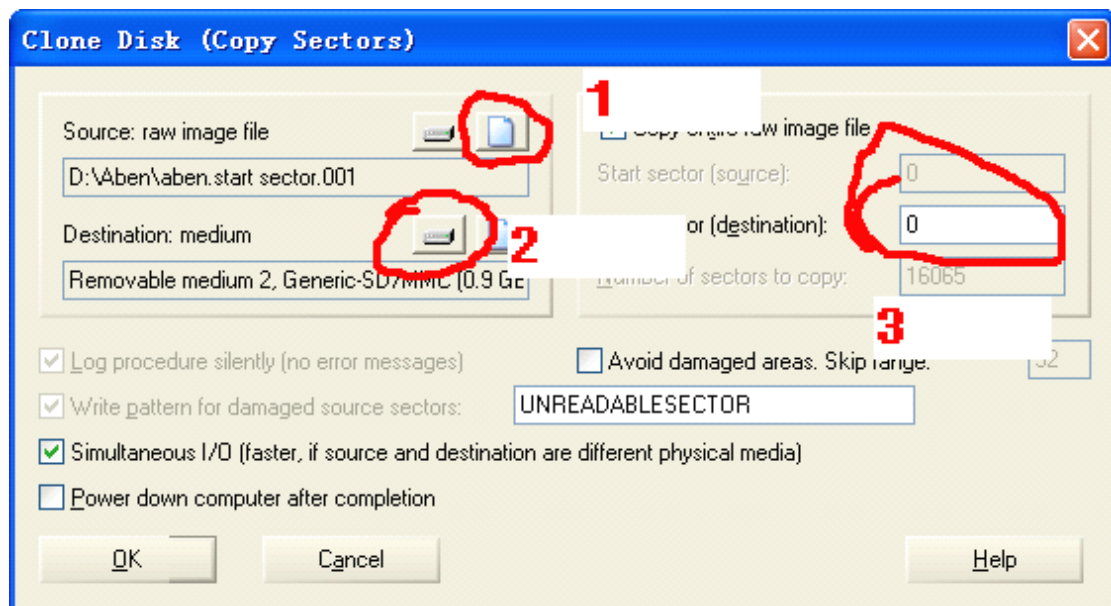
Source choose file **aben.start sector.001** which in the folder

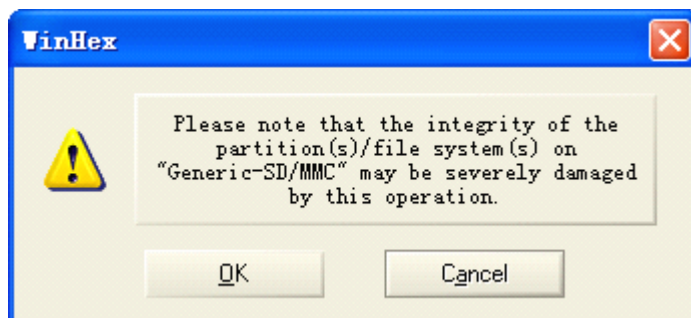
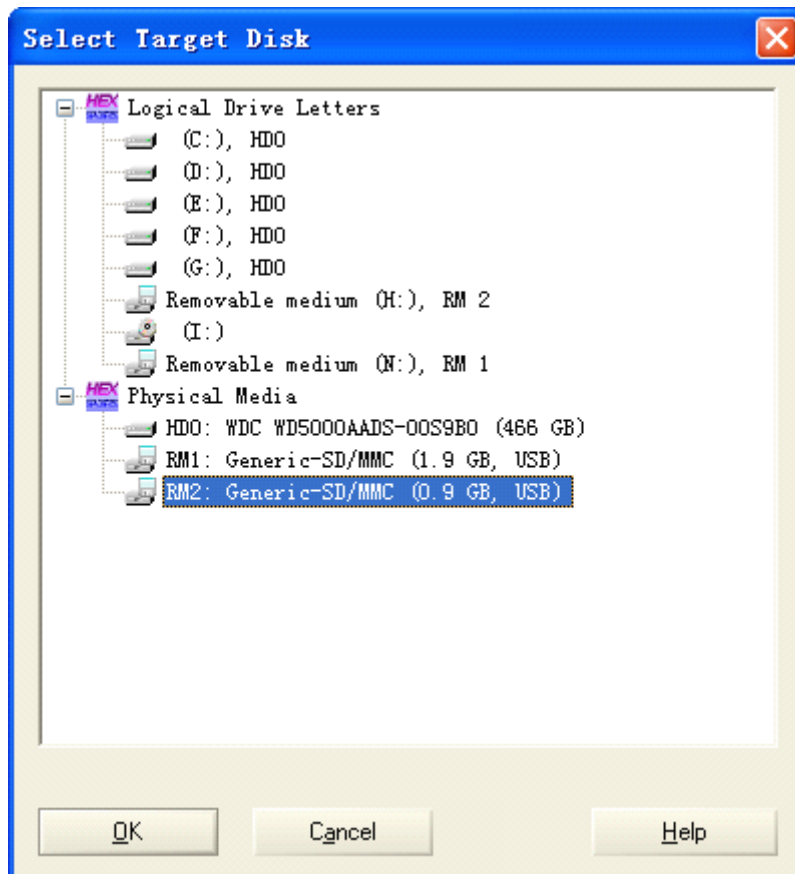
Destination choose the TF card which will use as recover card

Start sector fill in **0**

Click OK







After finish take out the TF card and insert again
Format the TF card to FAT32(fast format)



2: Copy system file to the TF card

Copy the folder android in the root of TF card

3: Auto recover system

Insert the TF card to your flytouch tablet. Usually insert the up TF slot.
Turn on the tablet. Tablet start recover process.



Date: 2011/1/8