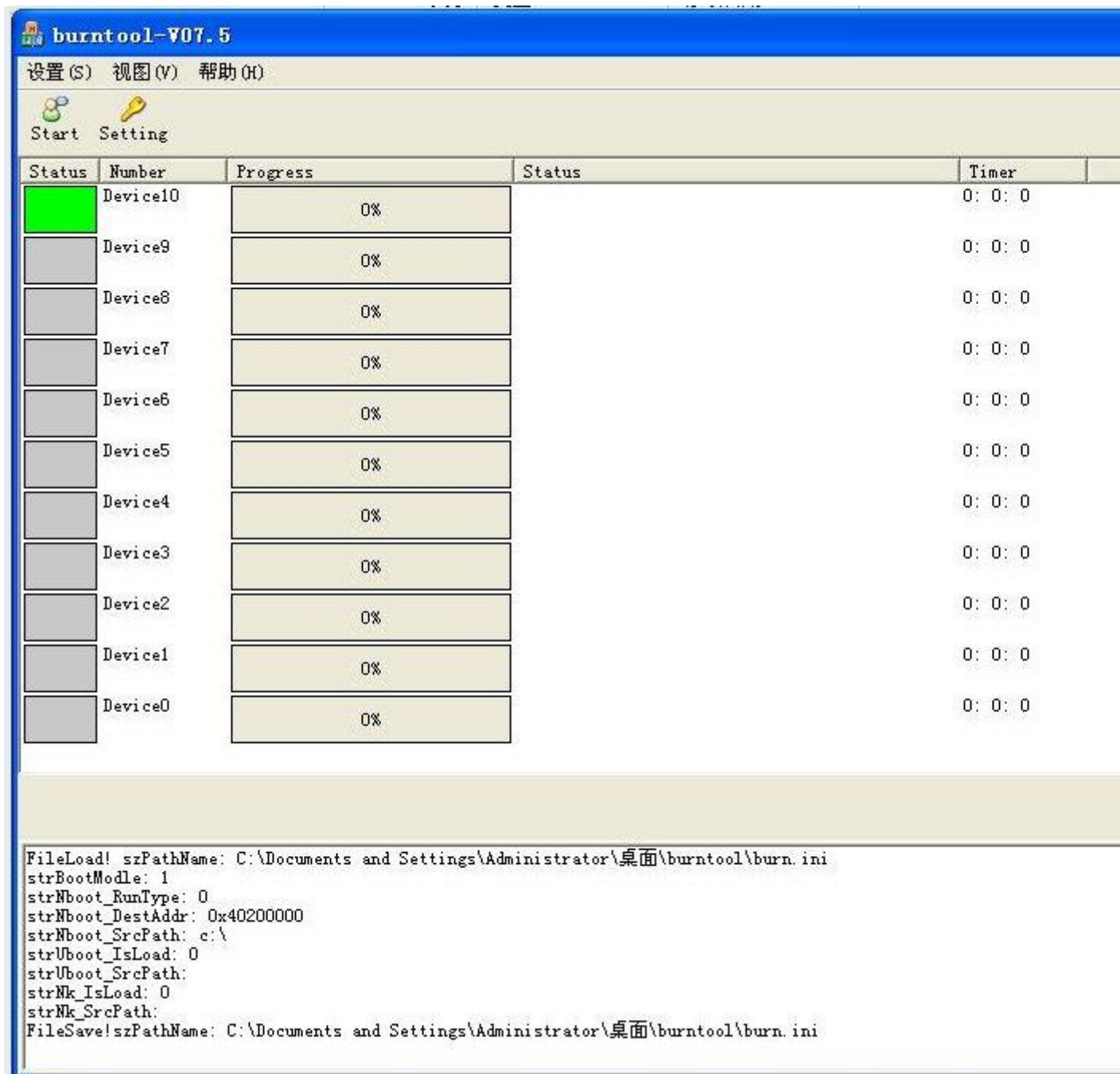
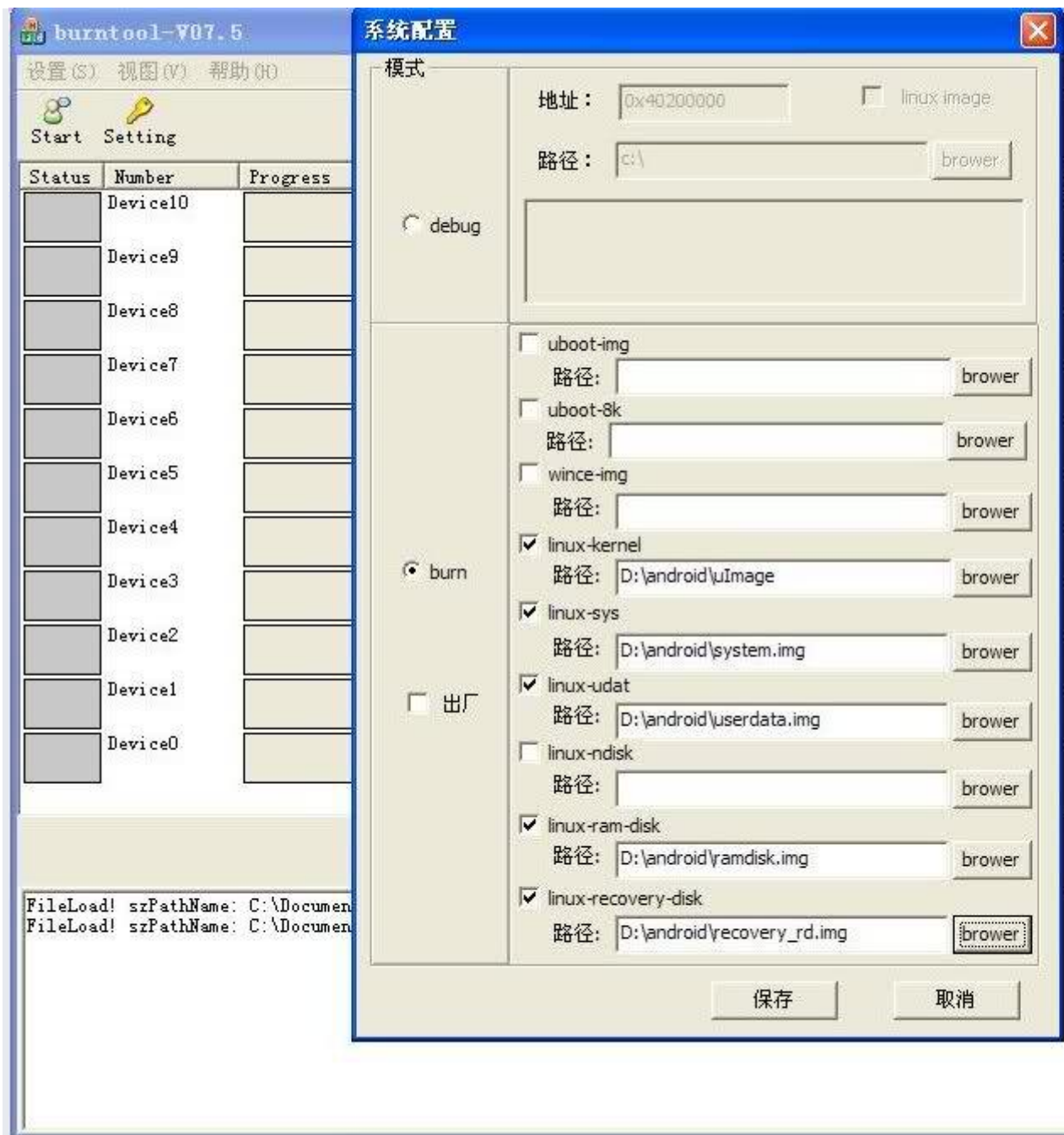


What you have to do is:

- 1) Get a cable to connect the tablet to the pc.
- 2) go here and get the last firmware ----- dl.dbank.com/c0px0ishux or www.mediafire.com/?630oge6d4a32gzs
- 3) Get the burnttool here ----- megaupload.com/?d=QCPV7V9D
- 4) Extract both of them
- 4) Turn off you tablet.
- 5) Connect the table to the pc with the cable
- 6) Hold the Menu button + Power button for 5 seconds
- 7) In windows it will pop up a message saying that a new device has been detected and the it will say that it was impossible to find drivers to connect the device.
Go to your Control panel --> Device manager. Change to classic view to find the Device manager
It will show some unreconized hardware with a yellow mark. Rigth click on that-----> update Driver
The in the new window that popups you choose Install from a list or a specific location ----> Dont search i will choose the driver to install --> Have a disk ---> then browse to the place where you extracted the burnttool ---> choose the file named "secbulk.inf" and confirm. Then just do next-next-next till the end
- 8) go to the place where you extracted the burn tool and open the file name burnttool_v07.5
- 9) in the burnttool you should see the device10 bar at green if the device is correctly connected to the pc



10) Go to the settings button and a windows will appear just put the browse the files that you extracted from the downloaded firmware and put them as you see in the image



11) in the lower part of the window press the button at left to confirm

12) back in the main window press start

13) wait for the update to complete until your tab says that you can disconnect and voilla

ps: in step 7 if you take too long to do it your tab you eventually boot up to android if that happens just turn it off and repeat step 6

pss: i did this way because i was in version 925 that has no update by mini sdcard. if you have 1001 i sugest that you do the sdcard way.

psss: some people are complaining about the wireless doesn't work with this update. keep in mind that this update fix the wifi switch so check if its on first.

pssss: im not responsible for any damage that this process could do to your tablet